



2026-2030

TOWN OF ALGOMA

COMPREHENSIVE OUTDOOR RECREATION PLAN



TOWN OF ALGOMA

**COMPREHENSIVE OUTDOOR
RECREATION PLAN 2026-2030**

ADOPTED DECEMBER 17, 2025

ACKNOWLEDGEMENTS

TOWN BOARD

Joel Rasmussen, *Town Chair*
Daniel Martin, *Supervisor*
Mike Brooks, *Supervisor*
Patricia Clark, *Supervisor*
Teresa Van Aacken, *Supervisor*

PLANNING COMMISSION

Daniel Martin
Bill Van Aacken
Mike Skoglund
Linda Kollmann
Scott Fischer
Sherri Maruska
Kyle Kehoe

TOWN OF ALGOMA

Margaret Mahoney, *Town Administrator*
Jason Loduha, *Public Works Director*

TABLE OF CONTENTS

CHAPTERS

06	Chapter 01. Introduction
15	Chapter 02. Recreational Resources
28	Chapter 03. Recreational Needs
39	Chapter 04. Community Voice
54	Chapter 05. Goals and Recommendations
74	Chapter 06. Resolution of Adoption

MAPS

11	Map 1-1. Town of Algoma Location
13	Map 1-2. Community Overview
25	Map 2-1. Bicycle and Pedestrian Facilities
26	Map 2-2. Natural Resources
35	Map 3-1. Residential Areas Served by a Park
62	Map 4-1. Recommended Bicycle and Pedestrian Facilities

TABLES

17	Table 2-1. Town of Algoma Park Classification Definitions
22	Table 2-2. Town of Algoma Park Matrix
30	Table 3-1. Population Trends and Projections (2000-2050)
32	Table 3-2. Town of Algoma Park Facilities By Prevalence and Population per Facility
33	Table 3-3. Estimated Change in Statewide Participation in Nature-Based Activities (2020-2040)
37	Table 3-4. Winnebago County Key Health Metrics (2025)
51	Table 4-1. Q8 Results
67	Table 5-1. Town of Algoma CORP 5-Year Action Program (Part One)
68	Table 5-2. Town of Algoma CORP 5-Year Action Program (Part Two)

TABLE OF CONTENTS

TABLES

- 69 Table 5-3. WDNR Knowles-Nelson Stewardship Local Assistance Grant Programs
- 70 Table 5-4. Federal Recreation Grant Programs
- 71 Table 5-5. WDNR Department Grant Programs (Part One)
- 72 Table 5-6. WDNR Department Grant Programs(Part Two)
- 73 Table 5-7. Other Federal, State, and Community Grant Programs

FIGURES

- 08 Figure 1-1. Four Phased Plan Development Process
- 09 Figure 1-2. Plan Timeline
- 12 Figure 1-3. Town of Algoma Quick Facts
- 16 Figure 2-1. Town of Algoma Park and Recreation Facilities Quick Facts
- 29 Figure 3-1. Recreational Needs Assessment Components
- 31 Figure 3-2. Population Trends and Projections (2000-2050)
- 31 Figure 3-3. Median Age Trends (2010, 2023)
- 34 Figure 3-4. Acres of Parkland per 1,000 Residents (Communities <20,000 residents)
- 34 Figure 3-5. Number of Residents per Park (Communities <20,000 residents)
- 44 Figure 4-1. Demographics of Survey Respondents
- 45 Figure 4-2. Q1 Results
- 45 Figure 4-3. Q2 Results
- 46 Figure 4-4. Q3 Results
- 46 Figure 4-5. Q4 Results
- 47 Figure 4-6. Q5 Results
- 48 Figure 4-7. Q6 Results
- 49 Figure 4-8. Q7 Part 1 Results
- 50 Figure 4-9. Q7 Part 2 Results
- 51 Figure 4-10. Q8 Results
- 52 Figure 4-11. Q9 & Q10 Results
- 53 Figure 4-12. Q11 Results

1

INTRODUCTION

INTRODUCTION

PLAN PURPOSE

The Town of Algoma Comprehensive Outdoor Recreation Plan (CORP) is updated every five years and serves as a long-range, 20-year guide for the development and enhancement of the Town’s parks, natural areas, and recreational facilities. This plan offers a thorough evaluation of existing recreational assets, identifies future needs and opportunities, and outlines strategic goals and objectives to support well-informed planning and investment in outdoor recreation

The CORP is shaped by a combination of public input and data-driven analysis to ensure it reflects the values, priorities, and vision of Algoma residents. This update was developed through collaboration between the Town of Algoma, the East Central Wisconsin Regional Planning Commission, the Town Board, local stakeholders, and community members. In addition to serving as a guiding document, the CORP ensures the Town remains eligible for competitive grant programs administered by the Wisconsin Department of Natural Resources (DNR)—critical funding sources that support park enhancements, recreational expansions, and land acquisitions for the benefit of current and future generations in the Town.



PLAN PROCESS

A project kickoff meeting was held on February 24th, 2025 with the Town of Algoma and ECWRPC staff. The CORP was developed in four phases, as depicted in Figure 1-1.

A draft of the plan was completed on November 19th, 2025, and the final plan was adopted on December 17, 2025 by the Town of Algoma Board.

FIGURE 1-1. FOUR PHASED PLAN DEVELOPMENT PROCESS



Phase One provided a foundation for the planning process by gathering feedback on the condition and quality of the existing park system through community engagement efforts. A park inventory was also completed by ECWRPC staff to document all park facilities.

In Phase Two, ideas and preferences identified by the public during community engagement efforts were incorporated into the recreational needs assessment. ECWRPC staff then worked with key stakeholders to list goals and opportunities that complement the assessment.

In Phase Three, specific and actionable objectives were developed to support the goals and opportunities identified during Phase Two. Throughout this phase, key stakeholders and Town staff were involved in refining the plan recommendations. A five-year Action Program was developed during this phase.

Throughout Phase Four, Town staff, key stakeholders, and the public reviewed the final plan and provided edits as needed. The Comprehensive Outdoor Recreation Plan update was ultimately approved by the Town of Algoma Plan Commission and Town Board.

FIGURE 1-2. PLAN TIMELINE



COMMUNITY ENGAGEMENT EFFORTS

The success of any type of local planning effort is often dependent on the involvement, support, and active participation of community residents in the plan’s preparation. The Town of Algoma provided opportunities for public input during each phase of the planning process. Figure 1-2 identifies key engagement efforts throughout the update of the CORP. These efforts and events are described in further detail below.

TOWN BOARD

ECWRPC staff provided the Town of Algoma Board with a draft of the plan, where members had the opportunity to provide feedback. A final meeting was held on December 17, 2025 to approve the CORP update.

WEBSITE AND SURVEY

Community engagement efforts took place from May 7th to August 1st via a project website and survey. The survey generated 37 responses. Survey feedback is analyzed in detail in Chapter Five: Community Voice.

IN-PERSON EVENTS

An in-person community visioning session event was held at the Algoma Town Hall on July 30th, 2025 to promote the CORP update and gather feedback from community stakeholders and residents.

PAST PLANNING EFFORTS

TOWN OF ALGOMA COMPREHENSIVE PLAN 2040 (ADOPTED IN 2020)

The Town of Algoma Comprehensive Plan was updated and adopted in 2020. A previous comprehensive plan was adopted in 2007. These long-range plans cover a variety of topics such as transportation, economic development, land use, and environmental resources. The 2040 Plan references including green space and trails in future planning and developments as a key strategy. In addition, one of the action steps within the plan is to identify opportunities to include recreational amenities in new and existing developments.¹ It is important to recognize that parks and recreation facilities are elements of a larger, interconnected system that also includes streets, museums, libraries, stormwater systems, and other civic infrastructure.²

 <https://townofalgoma.org/wp-content/uploads/2021/02/T-Algoma-Comp-Pln-Updte-2040-Web-Version.pdf>

TOWN OF ALGOMA PARKS AND OPEN SPACE PLAN (ADOPTED IN 2009)

The Town of Algoma Parks and Open Space Plan was adopted in 2009. It included an inventory and analysis of the existing recreation activities and facilities within the Town. An examination of the Town revealed that incorporating recreational facilities in existing neighborhoods would prove to be difficult. However, the plan emphasized the need for additional parkland, trails, and facilities for residents and established goals to integrate recreational opportunities into future development in the Town.³

 <https://townofalgoma.org/wp-content/uploads/2018/01/2009-Park-and-Open-Space-Plan.pdf>

WISCONSIN STATEWIDE COMPREHENSIVE OUTDOOR RECREATION PLAN (ADOPTED IN 2025)

The 2025-2030 iteration of the Wisconsin Statewide Comprehensive Outdoor Recreation Plan (SCORP) provides recommendations to guide public outdoor recreation policy and planning decisions, the use of Land and Water Conservation Fund money that comes to Wisconsin, and other Department of Natural Resources (DNR) administered grant programs. This plan includes results from a statewide survey regarding outdoor recreation participation and frequency, as well as opinions about future needs. The DNR undertook an assessment of recreation opportunities and needs in each region of the state. Top priorities for planning include providing equitable opportunities, supporting the growth of recreational opportunities, and growing collaborative partnerships.⁴

 <https://dnr.wisconsin.gov/topic/fl/PropertyPlanning/Scorp>

ABOUT ALGOMA

PHYSICAL CHARACTERISTICS

The Town of Algoma, located in Winnebago County in east central Wisconsin, is known for its proximity to the City of Oshkosh and is uniquely situated for future growth. The Town enjoys strong regional connectivity, situated along U.S. Highway 41 and State Highway 21, providing convenient access to the Oshkosh urban center and more rural areas to the west.

Algoma offers a variety of recreational opportunities that appeal to outdoor enthusiasts. Most notably, Algoma is situated on the south end of Lake Butte des Morts which offers boating and fishing opportunities. In addition, the Town is dotted with parks and trails which support a variety of recreational activities such as walking, biking, and other family-friendly pastimes. The Town's blend of natural resources and accessible infrastructure makes it a desirable location for both residents and visitors seeking a balance of a peaceful environment and modern amenities.

SOCIAL CHARACTERISTICS

As of 2025, the Town of Algoma has a population of approximately 6,821 residents and 2,531 households. The Town has experienced modest population growth since 2000, with a projected population of 6,839 by 2030, according to Esri forecasts.

The median household income stands at \$117,810, and the median home value is \$339,290, with households spending about 18.0% of their income on mortgage payments, reflecting relatively affordable housing.

The Town has a daytime population of 4,494, supported by 114 local businesses consisting of a variety of business types, including LLCs. The Town of Algoma also maintains a low unemployment rate of 0.5%.

MAP 1-1. TOWN OF ALGOMA LOCATION

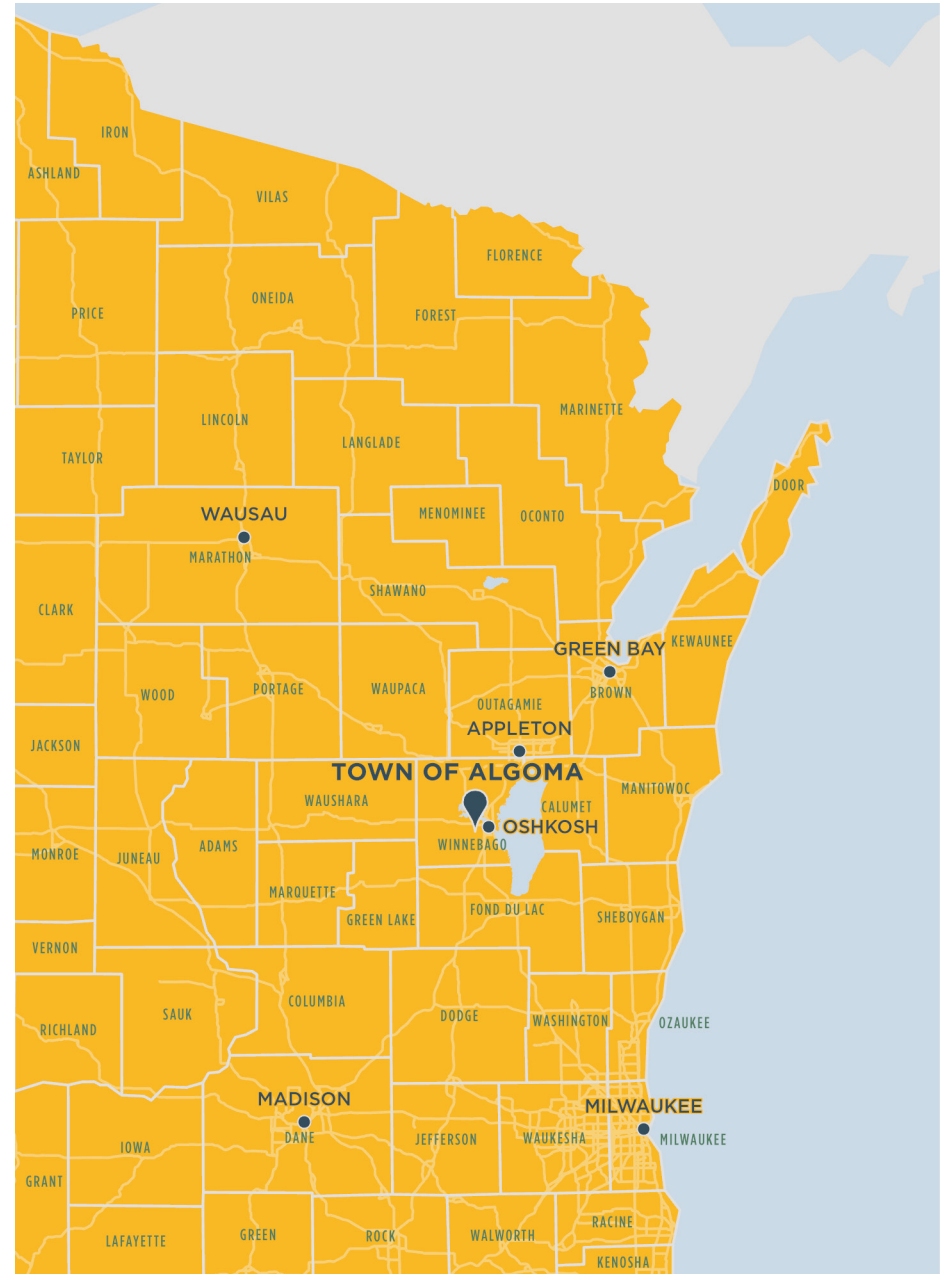
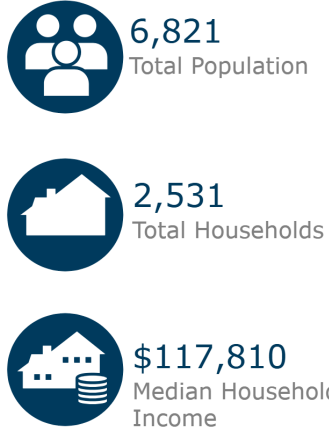
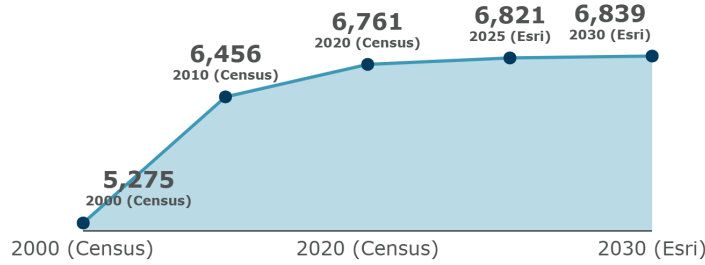


FIGURE 1-3. TOWN OF ALGOMA QUICK FACTS

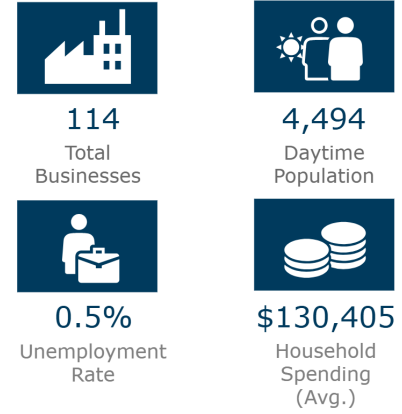
Key Facts



Population Growth



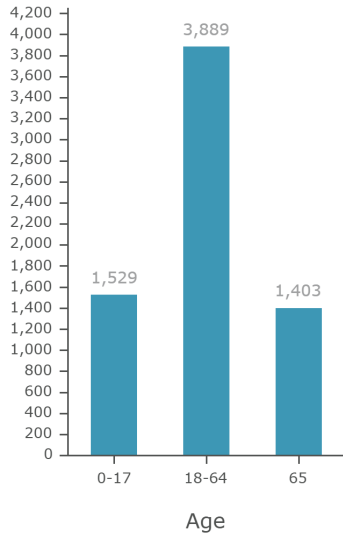
Jobs & the Economy



Housing

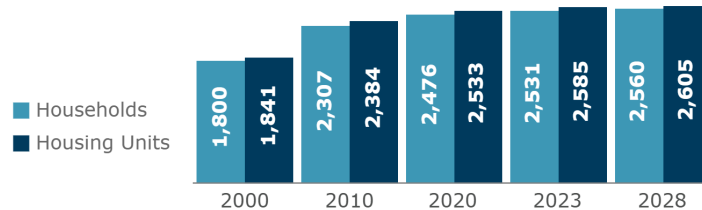


Population by Age

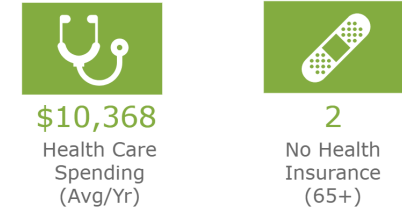


Median Age: 44.0

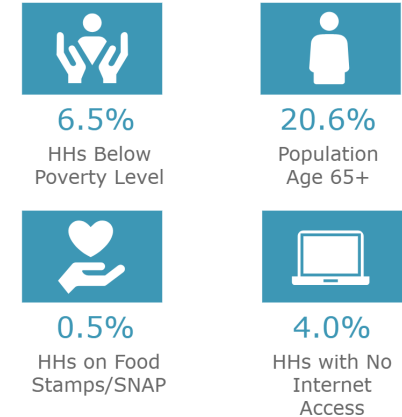
Households vs. Housing Units



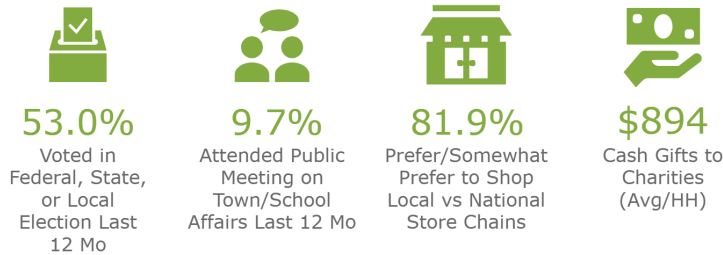
Health



At-Risk Population

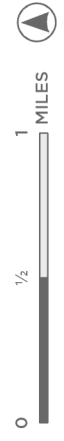
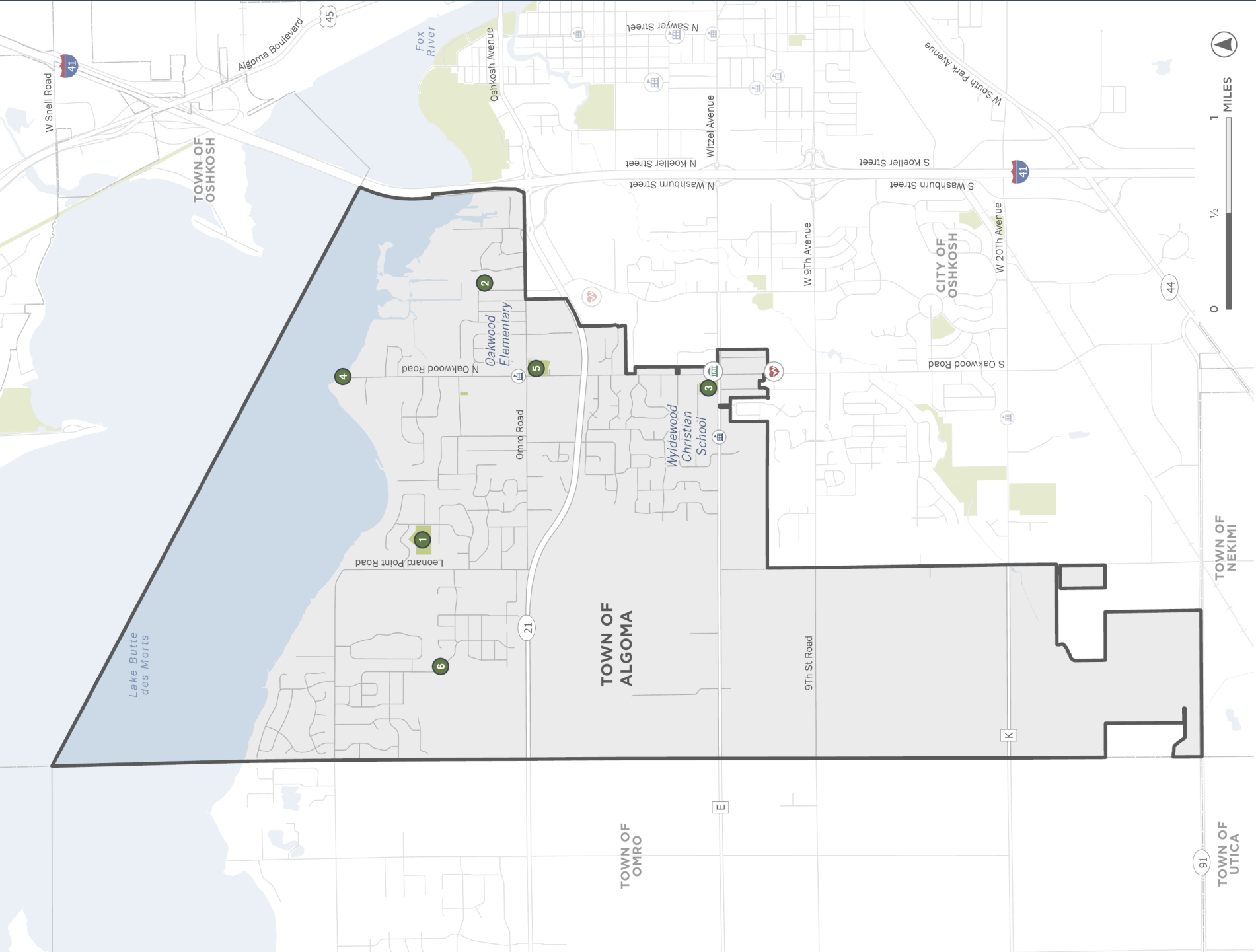


Community Participation



Source: This infographic contains data provided by Esri-U.S. BLS (2025), ACS (2019-2023), Esri (2025, 2030), Esri-Data Axle (2025), U.S. Census (2000, 2010, 2020), Esri-MRI-Simmons (2025). © 2025 Esri

MAP 1-2. COMMUNITY OVERVIEW



- 1 Jones Park
- 2 Kewaunee Park
- 3 Town Hall Park
- 4 Fishing Pier & Boat Landing
- 5 Irvine Stormwater Pond Trail
- 6 Westbreeze Boardwalk
- Elementary or Middle School
- High School
- Algoma Town Hall
- Hospital

CHAPTER ONE ENDNOTES

¹ *Town of Algoma Comprehensive Plan Update 2040*. Town of Algoma. 2020. <https://townofalgoma.org/wp-content/uploads/2021/02/T-Algoma-Comp-Pln-Updte-2040-Web-Version.pdf>

² Barth, David. *A New Approach to Parks and Recreation System Planning*. National Recreation and Park Association. 2020. <https://www.nrpa.org/parks-recreation-magazine/2020/november/a-new-approach-to-parks-and-recreation-system-planning/>

³ *Town of Algoma Parks and Open Space Plan, 2009*. Town of Algoma. 2009. <https://townofalgoma.org/wp-content/uploads/2018/01/2009-Park-and-Open-Space-Plan.pdf>

⁴ *Wisconsin Statewide Comprehensive Outdoor Recreation Plan 2025-2030*. Wisconsin Department of Natural Resources. 2025. <https://dnr.wisconsin.gov/topic/fl/PropertyPlanning/Scorp>



2

RECREATIONAL RESOURCES



RECREATIONAL RESOURCES

EXISTING PARK FACILITIES

From basketball courts to scenic trails, the Town of Algoma maintains a total of 6 parks, facilities and green spaces. The Town parks offer various opportunities for outdoor recreation and play. The Town also boasts natural resources including Lake Butte des Morts, which provides water-based opportunities such as fishing, kayaking, and boating.

Green spaces and boardwalks enrich the natural landscape. These resources enhance the Town's recreational offerings, foster a thriving community, and ensure accessible and diverse outdoor experiences for all residents. Figure 2-1 below summarizes the park system in the Town.

FIGURE 2-1. TOWN OF ALGOMA PARK AND RECREATION FACILITIES QUICK FACTS

ALL FACILITIES MAINTAINED BY THE TOWN OF ALGOMA



2

NEIGHBORHOOD
PARKS



1

MINI
PARK



2

GREEN
SPACES



1

SPECIAL
FACILITY

PARK CLASSIFICATIONS

The National Recreation and Park Association’s (NRPA) Park, Recreation, Open Space and Greenway Guidelines offer standard definitions for park classifications.¹ However, much has changed since the NRPA published this document in 1996. Today, each community must determine its own standards, level of service (LOS) metrics, and long-range vision for its parks and recreation system based on community issues, values, needs, priorities and available resources.² Table 2-1 summarizes the park classification system. The definitions are generally modified from the NRPA classifications to meet the Town’s needs.

Individual park classifications should be reviewed and adjusted if necessary when new facilities are added, parklands are purchased, or recreation programs are changed. Also identified below are level of service standards for both walking and driving. A park’s level of service is the accepted distance that the average park user will travel from their home to get to that recreation destination. LOS standards can help measure how accessible the park system is to a community’s residents. Park service areas and the park system are analyzed in more detail in Chapter 3: Recreational Needs.

TABLE 2-1. PARK CLASSIFICATION DEFINITIONS

Classification	Definition	Size	Level of Service
Community Park	Designed to serve a broad segment of the community and provide a wide range of recreational activities. Often host organized sports leagues and are generally located in areas that are easily accessible near major roads and trails.	15+ acres	Walking: 0.5 miles Driving: 2 miles
Neighborhood Park	Basic unit of the park system, intended to serve the immediate neighborhood and a variety of age groups. Often include playground facilities, open play areas, shelters, small sports courts, and toilet facilities.	1 - 15 acres	Walking: 0.25 miles Driving: 0.5 miles
Mini Park	Serve a very localized area, offering small, accessible recreational spaces for nearby residents. Facilities include small playgrounds, open play areas, and benches. Amenities are limited due to size, and off-street parking is not necessary.	0.25 - 1 acres	Walking: 0.25 miles Driving: 0.25 miles
Green Space	Properties designated as parks that have few or no built facilities, but provide public open space to the local neighborhood. May include benches, open play areas, fishing access, or trails.	0.25 - 5 acres	Walking: 0.25 miles Driving: 0.25 miles
Special Facility Park	Designed to cater to specific activities or interests beyond general recreational purposes. Often include specialized equipment or infrastructure such as boat launches, kayak/canoe launches, skateboarding equipment, or docks.	1 - 5 acres	Walking: 0.25 miles Driving: 2 miles
Dog Park	Designated area where dogs can exercise and socialize off-leash in a controlled environment. Facilities often include fenced-in areas, dog agility equipment, waste disposal stations, and shaded areas.	1 - 15 acres	Walking: 0.5 miles Driving: 2 miles
Nature Conservancy	Lands designated for the protection of the natural environment and wildlife habitat. Personal recreation is a secondary objective with limited to no developed facilities.	5+ acres	Walking: 0.5 miles Driving: 2 miles
Recreation Center	Designed to provide a range of recreational, social, and educational activities for the broader community. Indoor and outdoor amenities are provided such as sports courts, pools, and exercise equipment.	1 - 5 acres	Walking: 0.5 miles Driving: 10 miles

NEIGHBORHOOD PARKS



JONES PARK

Addie Parkway

8.9 acres

- ▶ Open Pavilion
- ▶ Paved Trails
- ▶ Open Space
- ▶ Parking Lot
- ▶ Portable Restrooms
- ▶ Outdoor Fitness Equipment
- ▶ Benches
- ▶ Playground
- ▶ Picnic Area
- ▶ Volleyball Court
- ▶ Pickleball Court
- ▶ Basketball Court
- ▶ Pet Waste Station
- ▶ Drinking Water Fountain



TOWN HALL PARK

15 N Oakwood Rd

5.0 acres

- ▶ Playground
- ▶ Picnic Area
- ▶ Parking Lot
- ▶ Open Space
- ▶ Volleyball Net
- ▶ Soccer Nets

MINI PARKS



KEWAUNEE PARK

1351 Kewaunee St

2.0 acres

- ▶ Picnic Area
- ▶ Open Space

- ▶ Playground

GREEN SPACES



IRVINE STORMWATER POND TRAILS

2725 Omro Rd
5.34 acres

- ▶ Trails
- ▶ Natural Area
- ▶ Parking Lot
- ▶ Benches



WESTBREEZE BOARDWALK

Rasmussen Rd/Westbreeze Dr
0.1 miles

- ▶ Boardwalk
- ▶ Little Free Library
- ▶ Natural Area
- ▶ Connection between two popular neighborhoods

SPECIAL FACILITY PARKS



LAKE BUTTE DES MORTS BOAT LANDING

Oakwood Rd

- ▶ Boat Launch
- ▶ Pier/Boat Dock
- ▶ Water Access
- ▶ Scenic Viewpoint
- ▶ Bench

TABLE 2-2. TOWN OF ALGOMA PARK MATRIX

	Acres	Restrooms (Seasonal)	Shelter	Picnic Tables	Walking/Biking Trail	Open Space	Natural Site	Playground	Basketball Court	Volleyball Net/Court	Pickleball Courts	Sledding Hill	Boat Launch	Pier	Soccer Nets	Workout Stations	Off Street Parking
Neighborhood Parks																	
Jones Park	8.9	X	X	X	X	X		X	X	X	X	X				X	X
Town Hall Park	5.0			X		X		X		X					X		X
Mini Parks																	
Kewaunee Park	2.0			X		X		X									
Green Spaces																	
Westbreeze Boardwalk	3.7				X		X										
Irvine Stormwater Pond Trails	5.3				X		X										X
Special Facility Parks																	
Lake Butte des Morts Boat Landing	0.1						X						X	X			

EXISTING BICYCLE AND PEDESTRIAN FACILITIES

TRAILS AND SIDEWALK

Overall, there are 3.5 miles of paved trail, 1.25 miles of unpaved trail, and 3.2 miles of sidewalk in the Town of Algoma boundary. The north side of the Town contains the largest stretch of sidewalk and bike lanes along Omro Road. The rest of the Town is largely unserved by sidewalk. Additionally, the Westbreeze Boardwalk links two neighborhoods via trail: the Olde Apple Acres and Westbreeze Meadows Subdivisions.

The Irvine Stormwater Pond was a recent addition to the Town's stormwater management system which features an unpaved pedestrian trail around the pond with native prairie flowers and grasses surrounding. Algoma's bicycle and pedestrian facilities are displayed in Map 2-1.

EXISTING NATURAL RESOURCES

WATER AND WOODLANDS

A wide variety of outdoor recreational opportunities are available in and around the Town of Algoma. Lake Butte des Morts and a few unnamed tributaries to the lake comprise the primary surface water in the Town. Lake Butte des Morts and the Fox River enable boaters, fishermen, and swimmers to move conveniently between Lake Winnebago, Lake Poygan and Lake Winneconne.

Several scattered wetland complexes and small areas of woodlands can also be found throughout the Town. The Town owns a large emergent/wet meadow wetland complex along the shores of Lake Butte des Morts and another near the Westbreeze Boardwalk. Threatened and endangered species such as Forster's Tern, Peregrine Falcon, and Blanding's Turtle have been recorded in these habitats. Map 2-2 highlights the natural resources in the Town of Algoma.



BICYCLE AND PEDESTRIAN FACILITY DEFINITIONS

BIKE LANE

A bike lane is a portion of the roadway which has been designated by striping, signing and pavement marking for the preferential or exclusive use by bicyclists.

SIDEWALKS

Sidewalks are a space for pedestrian travel within the public right-of-way that is separated from roadway vehicles. The terrace provides a buffer zone between users and vehicles.

SHARED USE PATH

A shared use path is an off-road facility that is strictly designed for both bicyclists and pedestrians. Typically, widths of these facilities range from 10-14 feet.

CROSSWALK

Pedestrian roadway facilities should clearly indicate to pedestrians where and when they should cross the street. It is equally important crosswalks are clearly visible to motorists entering a pedestrian area.

CURB RAMP CUT

Curb ramps cut through a curb (or are built up to it) to provide an accessible route that people can use to enter a crosswalk, cross the street, or access a bus stop (where walkways meet at a curb).

LANDSCAPING AND STREET FURNITURE

Landscaping along the street provides separation between motorists and pedestrians, reduces the visual width of the roadways, and beautifies.

LIGHTING

Pedestrian lighting increases drivers' visibility of pedestrians, promotes perceived personal security, illuminates potential hazards, and creates vibrant and inviting streetscapes.

PEDESTRIAN REFUGE ISLAND

Pedestrian refuge islands are spaces that provide a waiting area for those unable to completely cross the street during a signal crossing phase.

PEDESTRIAN COUNTDOWN TIMERS

Pedestrian countdown timers improve safety by providing information to assist pedestrians with crossing decisions, sometimes with pushbuttons.

RAPID FLASHING BEACON

The Rapid Flashing Beacon is a device used in combination with pedestrian warning signs to provide a high-visibility strobe-like warning to drivers when pedestrians use a crosswalk.

SIGNED SHARED ROADWAYS

Signed shared roadway (bike route) is simply a street/road that has been identified as a preferred bicycle route.

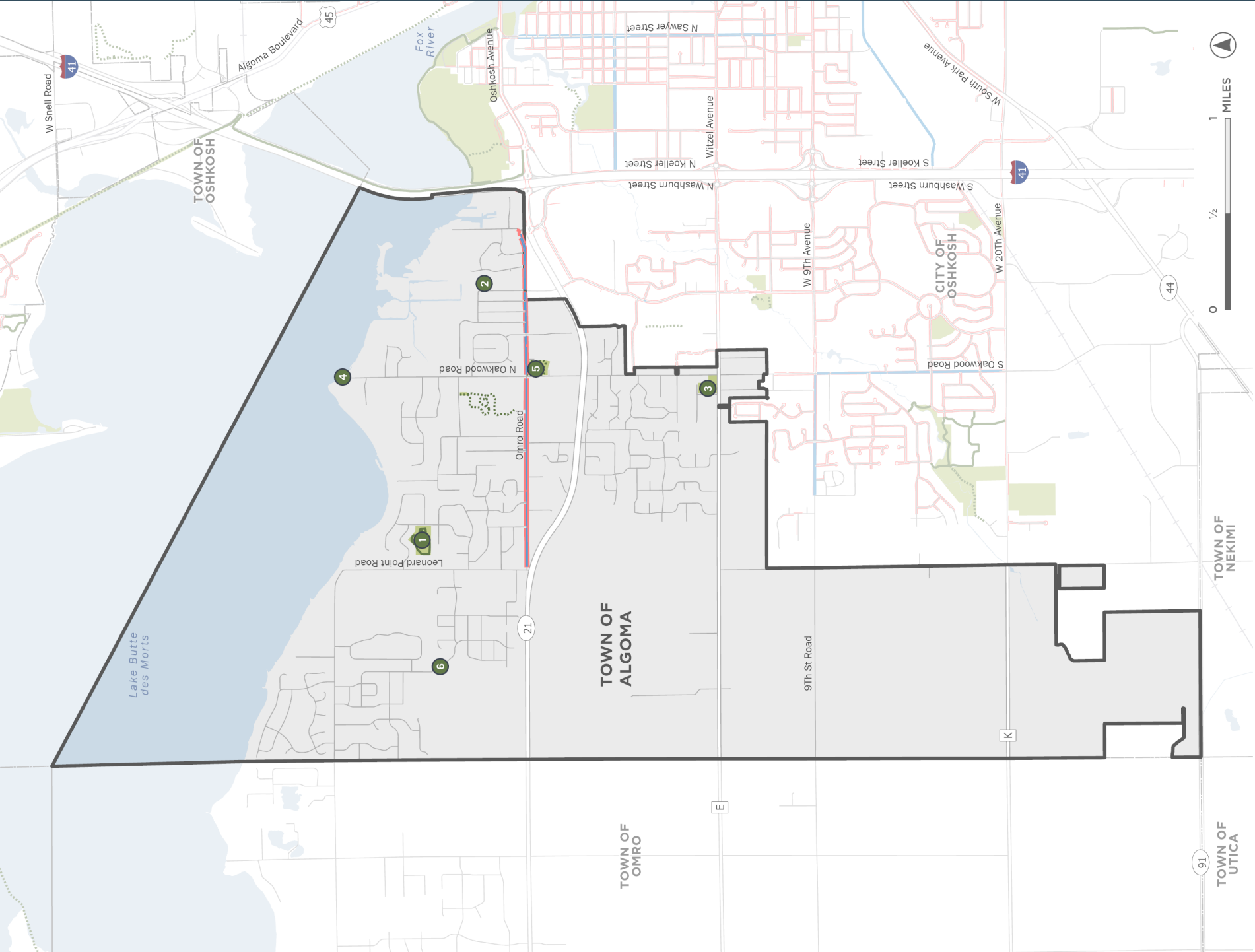
PAVED SHOULDERS

A paved shoulder accommodates bicyclists alongside travel lanes. Width varies according to the adjacent travel lane and whether or not a rumble strip is present.

SHARED LANE MARKINGS

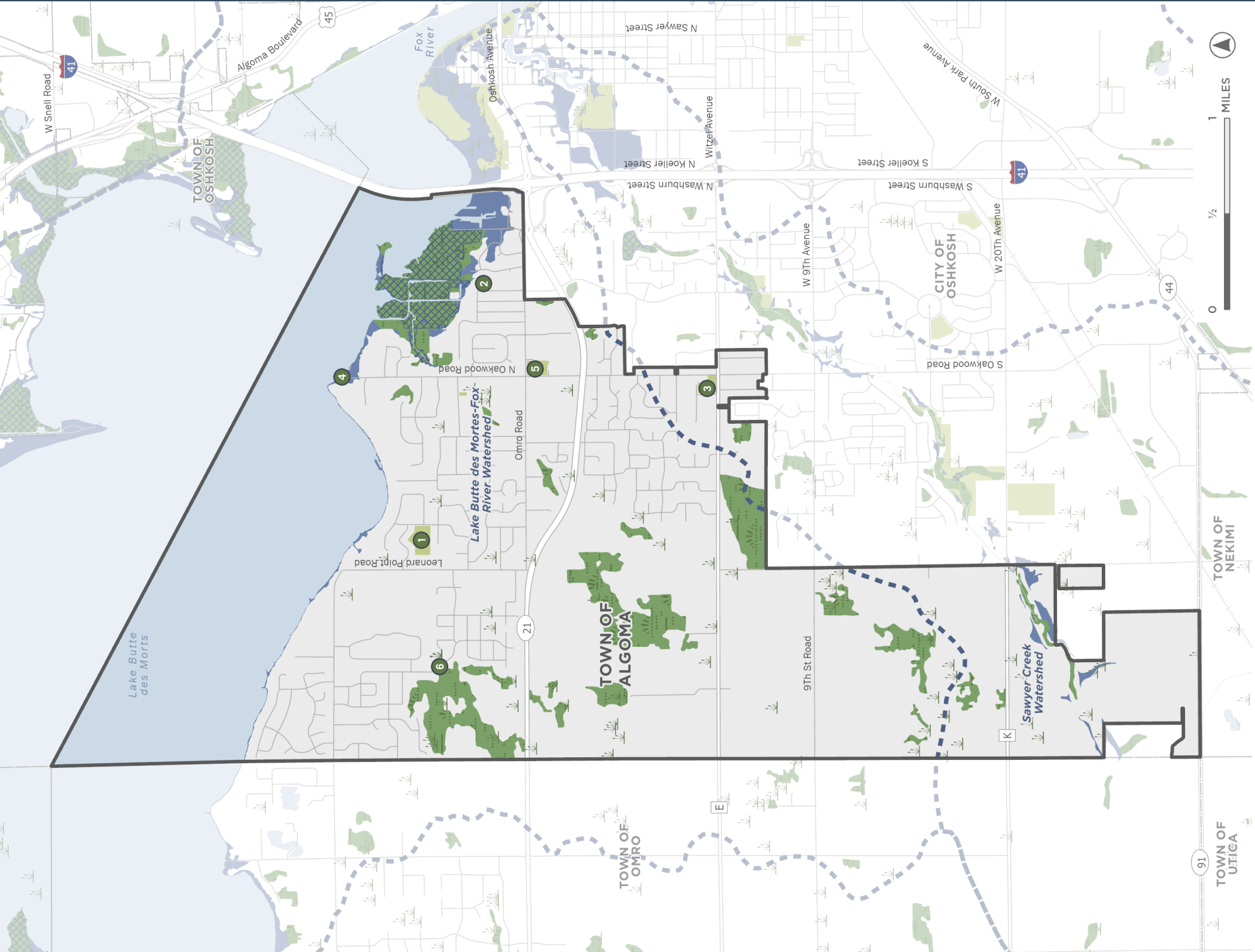
An alternative to the bike lane designation is the sharrow, or lane designation that informs bicyclists and motorists to share the road.

MAP 2-1. BICYCLE AND PEDESTRIAN FACILITIES



- 1 Jones Park
- 2 Kewaunee Park
- 3 Town Hall Park
- 4 Fishing Pier & Boat Landing
- 5 Irvine Stormwater Pond Trail
- 6 Westbreeze Boardwalk
- Bike Lane
- Stormwater Pond Trail
- Boardwalk
- Unpaved Trail
- Paved Trail
- Sidewalk

MAP 2-2. NATURAL RESOURCES



- 1** Jones Park
- 2** Kewaunee Park
- 3** Town Hall Park
- 4** Fishing Pier & Boat Landing
- 5** Irvine Stormwater Pond Trail
- 6** Westbreeze Boardwalk
- Wetlands (<5 Acres)
- Wetlands (>5 Acres)
- Floodplain and Wetlands
- 100 Year Floodplain
- Subwatershed Boundary



CHAPTER TWO ENDNOTES

¹ Mertes, James and Hall, James. *Park, Recreation, Open Space and Greenway Guidelines*. National Recreation and Park Association. 1996. https://books.google.com/books/about/Park_Recreation_Open_Space_and_Greenway.html?id=U3FRAAAAMAAJ

² Barth, David. *A New Approach to Parks and Recreation System Planning*. National Recreation and Park Association. 2020. <https://www.nrpa.org/parks-recreation-magazine/2020/november/a-new-approach-to-parks-and-recreation-system-planning/>





3

RECREATIONAL NEEDS

RECREATIONAL NEEDS

ASSESSING NEED

The Town of Algoma’s parks and recreational facilities serve not only the Town’s residents, but also surrounding rural areas and the City of Oshkosh. The demographics of the Town have shifted over the past decades, and its population is projected to remain steady through 2050, whereas its neighboring communities are projected to decline in population. Therefore, this comprehensive recreational needs assessment will outline the evolving needs in the community.

A variety of data is analyzed in this chapter to identify key recreational needs for the Town of Algoma. Figure 3-1 lists the six components of the recreational needs assessment. These components include a population assessment, facilities assessment, systems assessment, accessibility assessment, health assessment, and community voice overview.

FIGURE 3-1. RECREATIONAL NEEDS ASSESSMENT COMPONENTS



POPULATION ASSESSMENT

HISTORIC AND PROJECTED POPULATION

Per the ACS 2023 5-Year Estimates, the current population of the Town of Algoma is 6,938 people. From 2000 to 2020, the Town experienced a large amount of growth, as the population increased just under 20% according to U.S. Census data. The Wisconsin Department of Administration (DOA) predicts this trend will discontinue through 2050 with the population remaining steady or slightly declining. It is possible the Town of Algoma will continue to develop and the DOA projections may be lower than what is actually experienced. Table 3-1 and Figure 3-2 show population trends for the Town of Algoma and comparable communities. The Town of Algoma attributes for about 4% of Winnebago County's population (Table 3-1).

AGE TRENDS

The Town of Algoma has an older population than the County as a whole. Per the ACS 2023 5-Year Estimates, 26.1% of the Town's residents are under the age of 20. The Town's median age has increased from 42.8 in 2010 to 47.2 in 2023. In the same time period, the median age for Winnebago County remained relatively steady from 37.4 to 38.4. Of the communities analyzed in Figure 3-3, the Town of Algoma's median age is the highest.

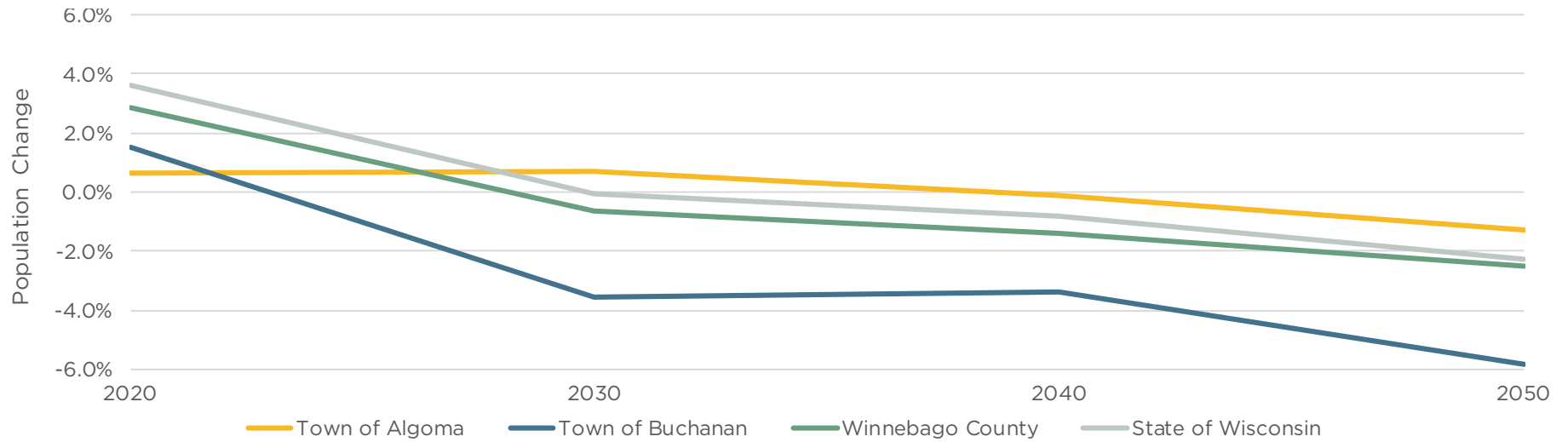
Age trends indicate that the Town contains a large percentage of families. Therefore, recreational facilities should accommodate the unique needs of both children and older adults.

TABLE 3-1. POPULATION TRENDS AND PROJECTIONS (2010-2050)

		T. Algoma		T. Buchanan		Winnebago County		State of Wisconsin	
Year	Source	Total Pop.	% Change	Total Pop.	% Change	Total Pop.	% Change	Total Pop.	% Change
2000	Census	5,733		5,689		156,763		5,363,675	
2010	Census	6,822	19.0%	6,755	18.7%	166,994	6.5%	5,686,986	6.0%
2020	Census	6,866	0.6%	6,857	1.5%	171,730	2.8%	5,893,718	3.6%
2030	DOA	6,913	0.7%	6,615	-3.5%	170,615	-0.6%	5,890,915	0.0%
2040	DOA	6,904	-0.1%	6,391	-3.4%	168,260	-1.4%	5,841,620	-0.8%
2050	DOA	6,814	-1.3%	6,019	-5.8%	164,080	-2.5%	5,710,120	-2.3%

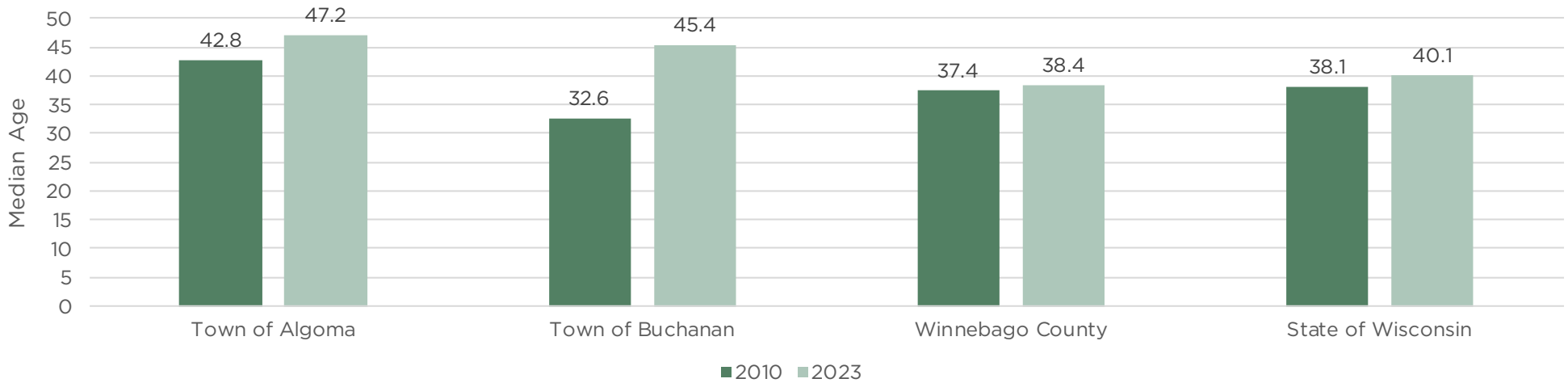
Source: 2000 U.S. Census, 2010 U.S. Census, 2020 U.S. Census, and DOA State Population Projections Vintage 2024.

FIGURE 3-2. POPULATION PROJECTIONS (2020-2050)



Source: 2020 U.S. Census and DOA State Population Projections Vintage 2024.

FIGURE 3-3. MEDIAN AGE TRENDS (2010, 2023)



Source: ACS 2010 5-Year Estimates and ACS 2023 5-Year Estimates.

FACILITIES ASSESSMENT

Outdoor park and recreation facilities provide a safe and inclusive environment where community members can gather, socialize, and engage in physical activity. People use parks for both active and passive forms of recreation, as well as for structured and unstructured activities. To accommodate the diverse needs, interests, and lifestyles of Town of Algoma residents, the Town should provide a broad array of park and recreation facilities. It is important to periodically assess facility demand as the community continues to evolve. In addition to the facilities listed below, the Town provides passive amenities such as benches and shelters.

The 2024 National Recreation and Park Association (NRPA) Agency Performance Review serves as the standard for evaluating the Town of

Algoma with comparable communities.¹ It offers an extensive collection of data on park and recreation agencies across the United States. Table 3-2 analyzes the prevalence of key park facilities in the Town of Algoma compared to communities with a similar population. On average, the Town of Algoma provides less facilities per person than other communities in the U.S. However, the need for additional facilities in the Town depends largely on local demand. Chapter 4: Community Voice includes detailed survey data on preferred park facilities in the Town.

It is also important to note that the Town has limited parks staff and resources, which should be considered prior to integrating additional park facilities into the Town.

TABLE 3-2. TOWN OF ALGOMA PARK FACILITIES BY PREVALENCE AND POPULATION PER FACILITY

Facility Type	Total Number of Facilities	Number of Residents per Facility	Median Number of Residents per Facility
		Town of Algoma: 6,938 residents (2023)	NRPA Community: Less than 20,000 residents
Basketball Courts	1	6,938	4,366
Diamond Fields	-	-	1,833
Disc Golf Courses	-	-	10,327
Dog Parks	-	-	11,079
Outdoor Fitness Zones/Exercise Stations	1	6,938	8,233
Pickleball Courts	1	6,938	3,390
Playgrounds or Play Structures	3	2,313	1,990
Rectangular Fields	1	6,938	2,493
Splash Pads	-	-	12,756

Source: ACS 2023 5-Year Estimates and 2024 NRPA Agency Performance Review.

TABLE 3-3. ESTIMATED CHANGE IN STATEWIDE PARTICIPATION IN NATURE-BASED ACTIVITIES (2020-2040)

It is important to understand statewide recreational trends to effectively plan for recreational facilities at a local scale. Table 3-3 is published in the 2019-2023 Wisconsin Statewide Comprehensive Outdoor Recreation Plan.²

This table shows the estimated change in the number of people that would be participating in the top 25 nature-based recreational activities if the rate of participation in 2020 and 2040 are the same as today.

Ranked by number of additional participants from 2020 to 2040		Ranked by percent change in additional participants from 2020 to 2040	
Activity	# of Additional Participants	Activity	Percent Growth
Birding/wildlife watching at home	242,000	Birding/wildlife watching at home	8.60%
Picnicking/tailgating/cookout	231,000	Birding/wildlife watching away from home	7.70%
Visiting a nature center	209,000	Visiting a nature center	7.30%
Hiking/walking/running on trails	172,000	Nature photography	7.00%
Visiting a beach/beach walking	166,000	Gathering berries, mushrooms, etc.	6.90%
Birding/wildlife watching away from home	152,000	Picnicking/tailgating/cookout	6.30%
Nature photography	127,000	Visiting a beach/beach walking	5.30%
Fishing - any	124,000	Hiking/walking/running on trails	5.30%
Swimming in lakes/rivers/ponds	115,000	Motor boating	5.30%
Motor boating	113,000	Fishing - any	5.20%
Gathering berries, mushrooms, etc.	104,000	Hunting - any	5.20%
Bicycling on roads	92,000	Driving 4-WD vehicles on trails or routes	4.90%
Hunting - any	68,000	Target shooting	4.60%
Target shooting	64,000	Cross-country skiing	4.60%
Walking/running dogs on trails	55,000	Sailing	4.50%
Biking on rail-trails/developed trails	51,000	Swimming in lakes/rivers/ponds	4.50%
Canoeing/kayaking	51,000	Ice skating outdoors	4.20%
Ice fishing	40,000	Bicycling on roads	4.10%
RV camping	38,000	RV camping	3.90%
Waterskiing/tubing/wakeboarding	33,000	Ice fishing	3.70%
Target archery	31,000	Walking/running dogs on trails	3.60%
Tent camping	31,000	Riding ATV/UTVs on trails or routes	3.50%
Cross-country skiing	28,000	Target archery	3.40%
Ice skating outdoors	27,000	Waterskiing/tubing/wakeboarding	3.30%
Riding ATV/UTVs on trails or routes	26,000	Canoeing/kayaking	3.20%

Source: 2019-2023 Wisconsin Statewide Comprehensive Outdoor Recreation Plan (SCORP).

SYSTEMS ASSESSMENT

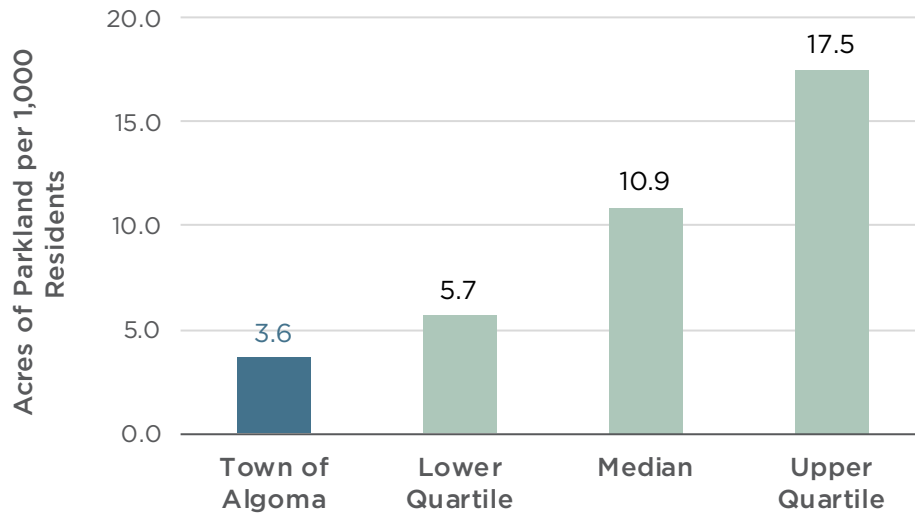
PARK SERVICE AREAS

The Town of Algoma maintains three parks and three green spaces/special facilities. As shown in Map 3-1, approximately half of the Town's residential neighborhoods are served by a park or facility within walking distance. Areas within a park service area include the north and east sides of Town. Unserved areas include the northwest, center, and southern sides of the Town. The Town roadways and neighborhoods also largely lack bicycle and pedestrian accommodations, which restricts the community's access to the existing parks and facilities.

PARKLAND DEMAND

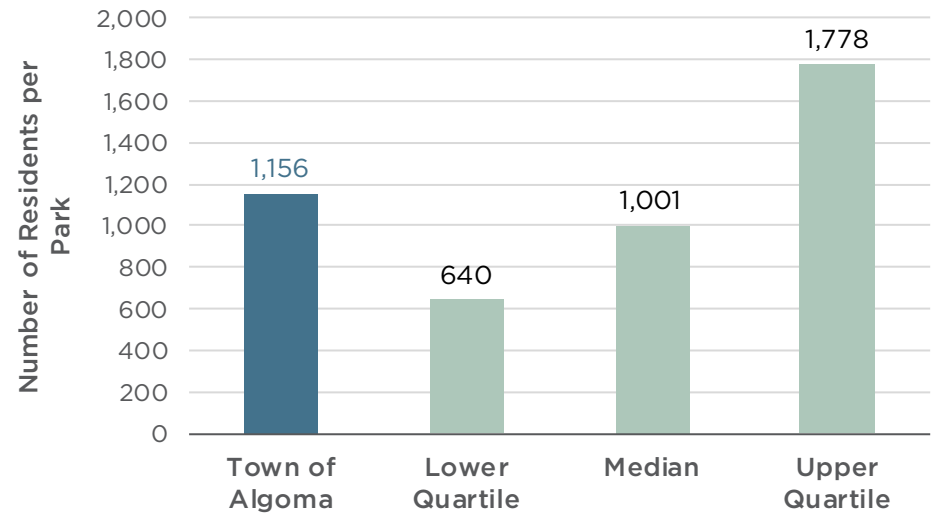
There are 25.1 total acres of parkland and green space in the Town of Algoma, equating to 3.6 acres for every thousand residents. According to the 2024 NRPA Agency Performance Review, this number falls below the lower quartile when compared to communities of similar size in the U.S. (Figure 3-4). Additionally, there are 1,156 residents per park in the Town. As shown in Figure 3-5, the Town offers fewer parks to its residents than comparable communities. The average area of the 6 parks is modest at 4.2 acres. Adding on trails at the Westbreeze Boardwalk could provide the community with a large, forested recreational space. In looking solely at the total acreage and number of parks available in the Town, there is a need to develop additional parks.

FIGURE 3-4. ACRES OF PARKLAND PER 1,000 RESIDENTS (COMMUNITIES <20,000 RESIDENTS)



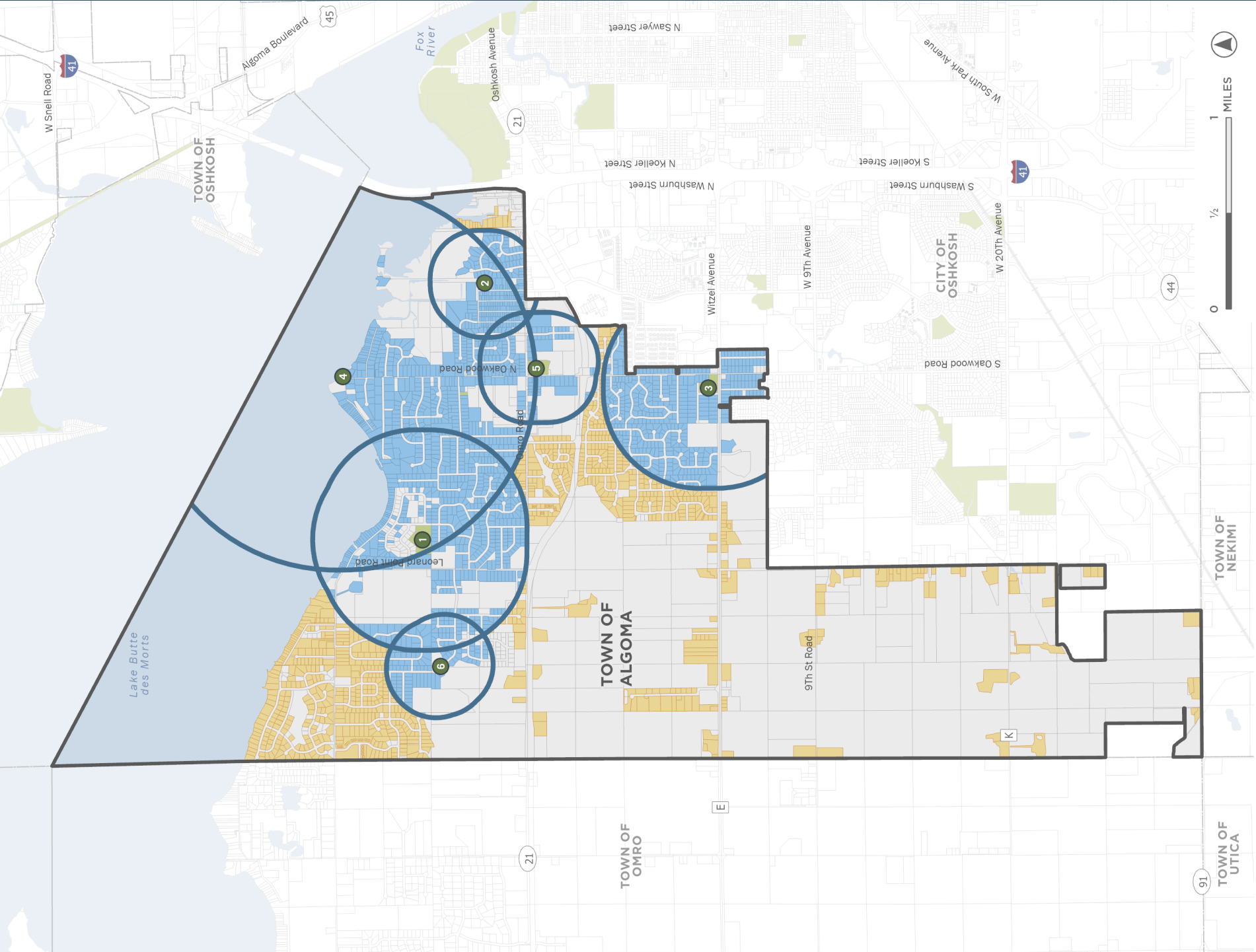
Source: ACS 2023 5-Year Estimates and 2024 NRPA Agency Performance Review.

FIGURE 3-5. NUMBER OF RESIDENTS PER PARK (COMMUNITIES <20,000 RESIDENTS)

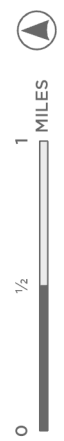


Source: ACS 2023 5-Year Estimates and 2024 NRPA Agency Performance Review.

MAP 3-1. RESIDENTIAL AREAS SERVED BY A PARK



- 1 Jones Park
- 2 Kewaunee Park
- 3 Town Hall Park
- 4 Fishing Pier & Boat Landing
- 5 Irvine Stormwater Pond Trail
- 6 Westbreeze Boardwalk
- Park Service Area Buffer
- Residential areas served by a park
- Residential areas unserved by a park



ACCESSIBILITY ASSESSMENT

ADA ACCESSIBILITY

From barrier removal to the development of new facilities, the inclusion of people with disabilities is vital in park and recreation planning. In 2010, the Americans with Disabilities Act (ADA) revised regulations to specifically address areas that affect parks and recreation. Therefore, the concept of renovating parks to make them more accessible and inclusive has grown increasingly popular. The Town of Algoma currently has a limited number of ADA-accessible facilities.

SAFE ROUTES TO PARKS

Creating safe walking and biking connections to parks is crucial for ensuring universal access to park facilities. The bicycle lanes and sidewalks along Omro Road help form safe routes to parks in the Town. Linking parks to the greater Oshkosh area via bicycle facilities such as trails or bike lanes should be prioritized. Major barriers to walking or biking include State Highway 21, Leonard Point Road, and Witzel Avenue.

INCLUSIVE PLAYGROUNDS

Inclusive playgrounds are accessible to children and caregivers of all abilities, allow all children to learn through play and better social-emotional skills, and boost children's confidence by allowing them to try new things and build new skill sets.³ Listed below are common inclusive features found on playgrounds.

- ▶ Communication boards
- ▶ Accessible surfacing
- ▶ Ramps
- ▶ Accessible paths to, and around, the playground
- ▶ Ample shade and seating
- ▶ Fences or natural barriers
- ▶ Imaginative play opportunities and themes
- ▶ Wheelchair accessible swings; Saucer swings; "Adaptive" or "inclusive" swings
- ▶ "Quiet" or "calm down" spaces
- ▶ Spinny egg-shaped chairs
- ▶ Accessible merry-go-rounds/"spinners"
- ▶ Tactile/musical elements
- ▶ Inclusive gliders/rockers
- ▶ Slides with easy transfer mechanisms

HEALTH ASSESSMENT

PARKS AND HEALTH

People’s health is often related to and influenced by their participation in outdoor recreation. According to the Trust for Public Land, there are eight ways parks can improve overall health.⁴

1. Parks increase exercise. People who live near and regularly use parks are shown to exercise more than people who don’t.
2. Most moderate exercise takes place in parks, about 12%. Parks are where people get the type of exercise their bodies need most.
3. Parks reduce stress and clear the mind. Outdoor areas boost focus and promote relaxation.
4. A park makeover with aesthetically pleasing spaces encourages use and promotes public health habits.
5. A variety of amenities can attract different users (i.e. skateparks, baseball diamonds, or trails) and encourage fun, physical activities.
6. Dedicated fitness zone areas encourage exercise and increase park use. Body fitness stations encourage adults to workout.
7. Supervised activities and programming maximize a park’s public health benefit.
8. Exercise is one of the cheapest ways to stay healthy. By promoting healthy habits, parks can help reduce health care costs.

COUNTY HEALTH RANKINGS

Table 3-4 highlights key metrics from the 2024 Winnebago County Health Rankings and Roadmaps. The measures in the County Health Rankings and Roadmaps are based on a model of population health that emphasizes social, economic, physical, and clinical factors.

TABLE 3-4. WINNEBAGO COUNTY KEY HEALTH METRICS (2024)

Health Metric	Description	Comparison	
		Winnebago Co.	Wisconsin
Poor or Fair Health	Percentage of adults reporting fair or poor health (age-adjusted)	Winnebago Co.	15%
		Wisconsin	13%
Poor Physical Health Days in Past 30 Days	Average number of physically unhealthy days reported in past 30 days (age-adjusted)	Winnebago Co.	3.9
		Wisconsin	3.3
Poor Mental Health Days in Past 30 Days	Average number of mentally unhealthy days reported in past 30 days (age-adjusted)	Winnebago Co.	5.6
		Wisconsin	4.8
Adult Obesity	Percentage of adults that report a BMI of 30 or more	Winnebago Co.	40%
		Wisconsin	34%
Physical Inactivity	Percentage of adults age 20 and over reporting no leisure-time physical activity	Winnebago Co.	21%
		Wisconsin	19%
Access to Exercise Opportunities	Percentage of population with adequate access to locations for physical activity	Winnebago Co.	48%
		Wisconsin	56%

Source: 2024 County Health Rankings and Roadmaps.

CHAPTER THREE ENDNOTES

¹ 2024 NRPA Agency Performance Review. National Recreation and Park Association. 2024. <https://www.nrpa.org/siteassets/research/2024-agency-performance-review.pdf>

² Wisconsin Statewide Comprehensive Outdoor Recreation Plan 2019-2023. Wisconsin Department of Natural Resources. 2019. <https://dnr.wisconsin.gov/topic/fl/PropertyPlanning/Scorp>

³ Lammert, Madison. *Inclusive playgrounds provide a safe place for children of all abilities. Here's why that's important.* Appleton Post Crescent. 2024. <https://www.postcrescent.com/story/life/family/2024/04/23/inclusive-playgrounds-are-cropping-up-what-are-they/73245636007/>

⁴ 8 Ways that Parks Improve your Health. The Trust for Public Land. 2013. <https://e7jecw7o93n.exactdn.com/wp-content/uploads/2022/10/Parks-Health-Brochure.pdf>



Town of Algoma Park Network

4

COMMUNITY VOICE

- 1 Jones Park
- 2 Kewaunee Park
- 3 Town Hall Park

- 4 Fishing Pier & Boat Landing
- 5 Irvine Stormwater Pond Trail
- 6 Westbreeze Boardwalk

- Elementary or Middle School
- High School

- Alg
- Hosp

Dream Park

more pickleball courts at Jones Park

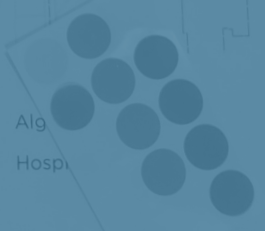
Lake front park with amphitheater

Trail under 41

Tennis courts
pickle ball
basket ball
base ball
Complex

Crossing Highway 21

Pedestrian/bike crossing on Highway 21

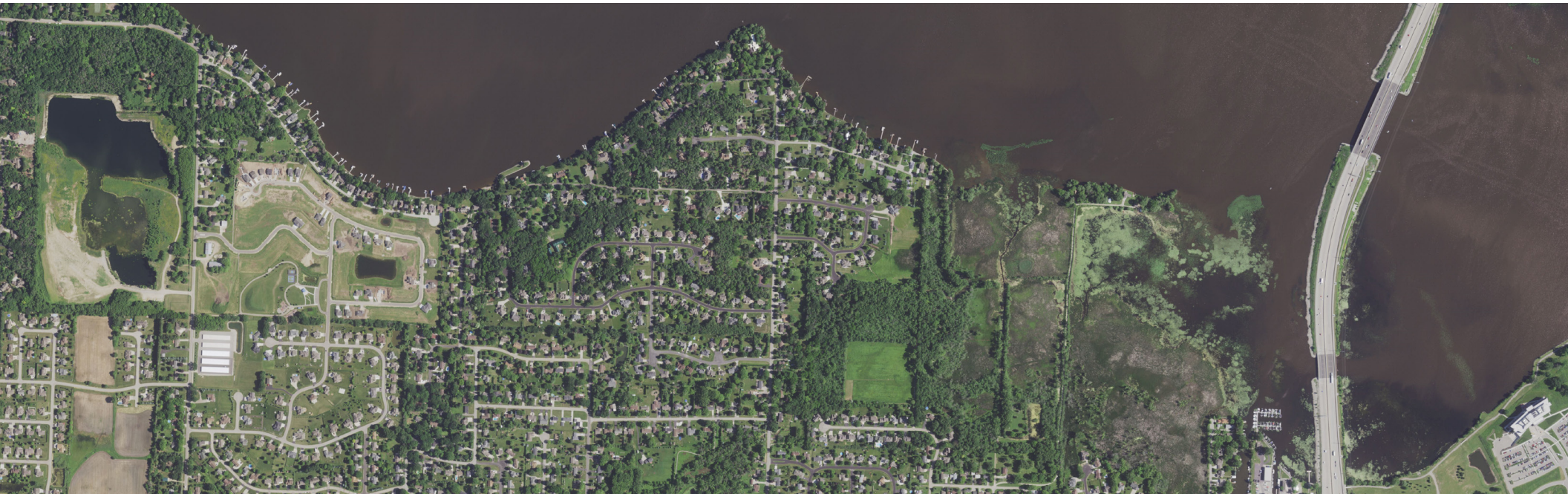


COMMUNITY VOICE

COMMUNITY ENGAGEMENT OVERVIEW

Creating a successful Comprehensive Outdoor Recreation Plan relies heavily on engaging the community. This chapter highlights feedback from residents and stakeholders about the Town's parks and recreation amenities. Key engagement efforts included a visioning session and community survey. Ultimately, community feedback informs the final recommendations for the plan.

By engaging a diverse cross-section of the population, including youth, seniors, families, and local organizations, this chapter underscores the commitment to creating parks that truly reflect the vision of the Town of Algoma community. This inclusive approach not only fosters transparency but also builds a sense of ownership among residents, ensuring that the final plan reflects their priorities.



COMMUNITY ENGAGEMENT EFFORTS

WEBSITE AND SURVEY

A project website for the CORP update was active from May 7th, 2025 to August 1st, 2025. The project website was advertised on the Town of Algoma website, social media, at the community visioning session event. The project flyer was posted at the Town Hall & Jones Park, as well as shared at Town Hall meetings. The website included a link to a survey with 15 questions, exploring topics such as park facility needs, bicycle and pedestrian access, priority investments, and demographics. The survey generated 37 responses.

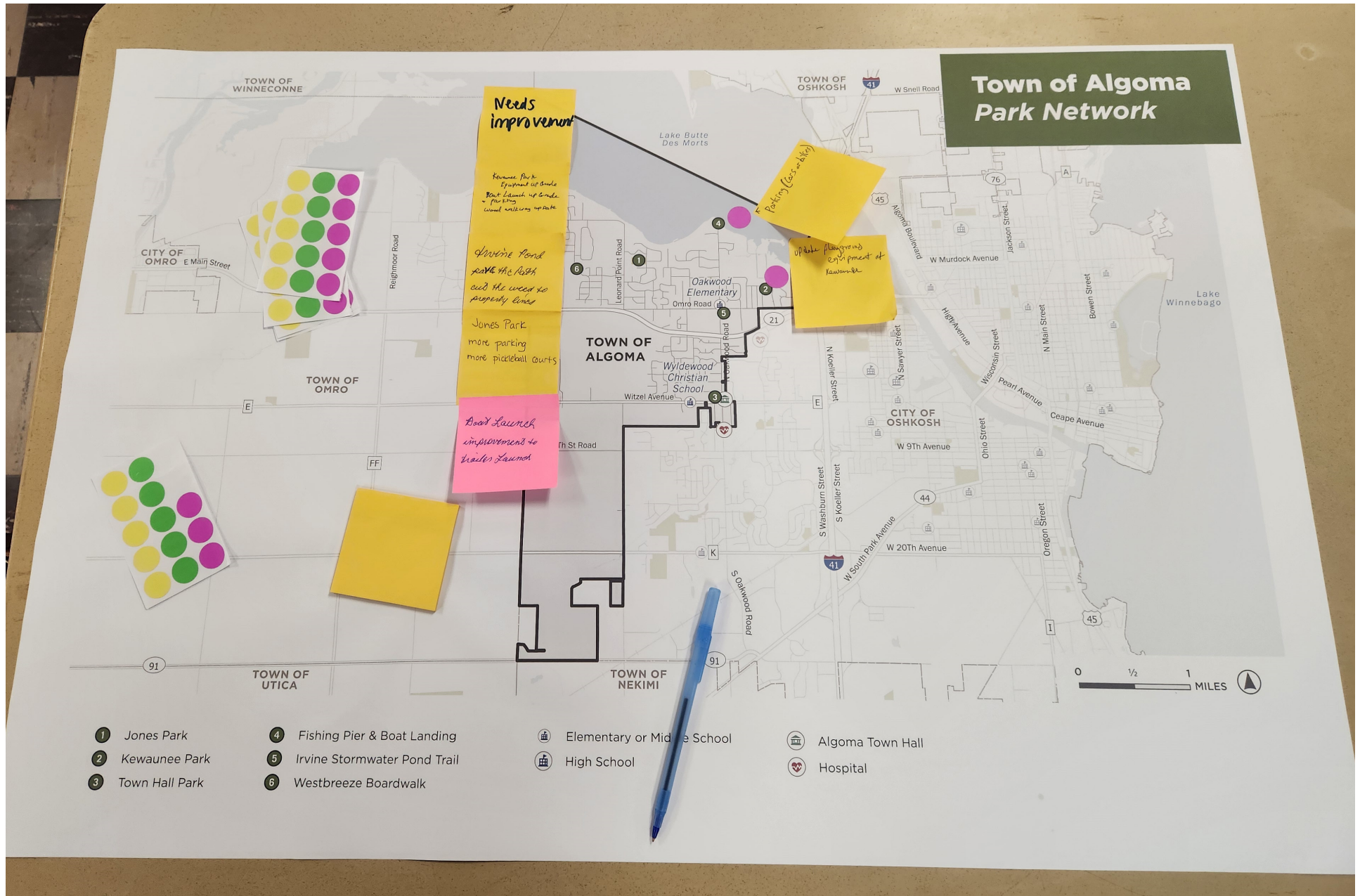
IN-PERSON ENGAGEMENT

ECWRPC staff and Town of Algoma staff attended an in-person community visioning session event on July 30th, 2025 to promote the CORP update and gather feedback from the community. The event was located at the Algoma Town Hall. During this event, key stakeholders and community members discussed park investments and improvements. Attendees were asked to identify parks and/or facilities that need improvement. In addition, one of the activities consisted of placing three stickers next to various parks and facilities on a poster amongst the top areas they would like to see the Town invest in.

Attendees were also asked for their input for new parks and what their "dream park" would entail. Ideas consisted of new trail crossings and connections, adding tennis courts and additional pickleball courts, and a lakefront park boasting an amphitheater.



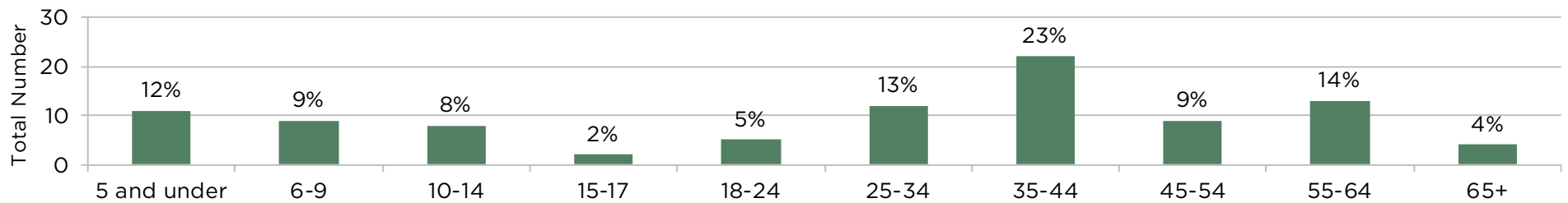
IN-PERSON ENGAGEMENT RESULTS: "NEEDS IMPROVEMENT"



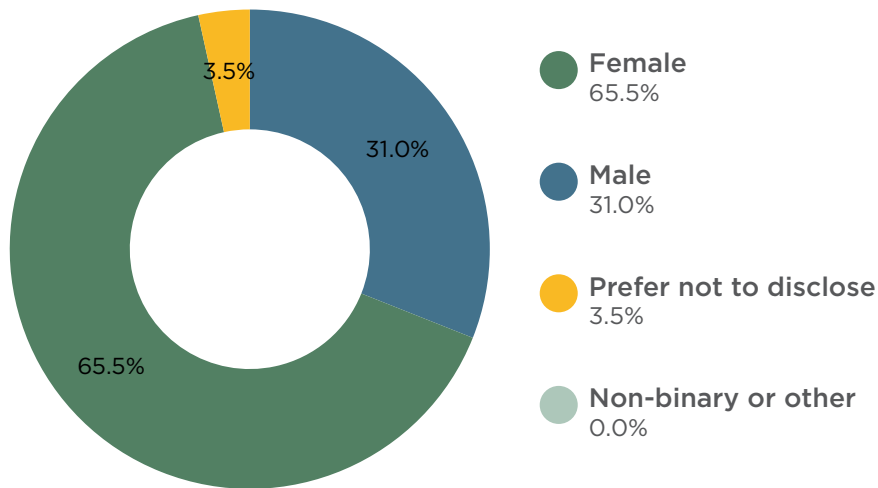
DEMOGRAPHICS

FIGURE 4-1. DEMOGRAPHICS OF SURVEY RESPONDENTS

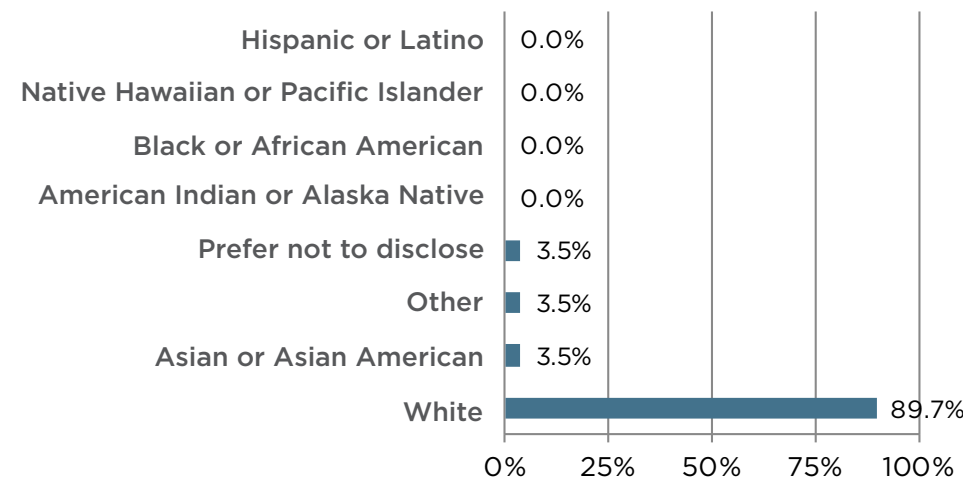
PLEASE IDENTIFY THE NUMBER OF PEOPLE IN EACH AGE GROUP LIVING IN YOUR HOUSEHOLD.



WHAT IS YOUR GENDER?

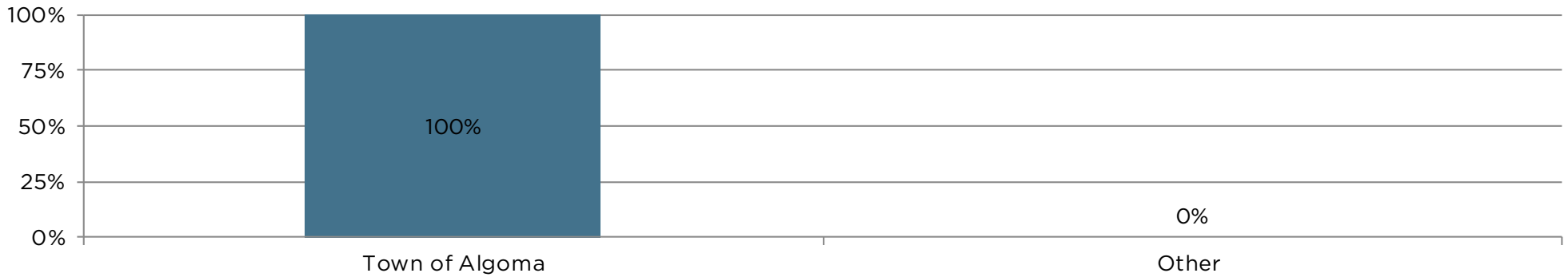


WHAT IS YOUR RACE OR ETHNIC GROUP?



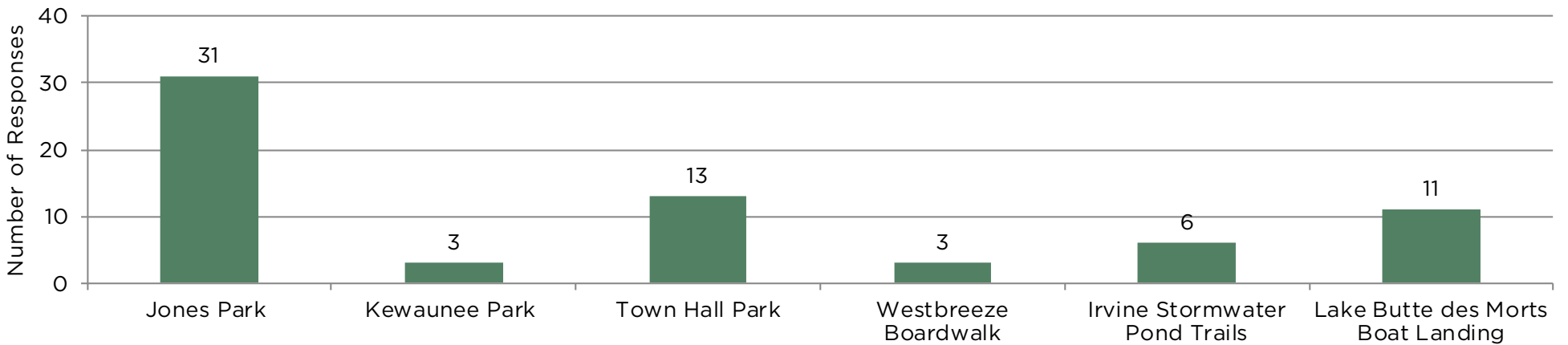
Q1: WHAT MUNICIPALITY DO YOU RESIDE IN?

FIGURE 4-2. Q1 RESULTS



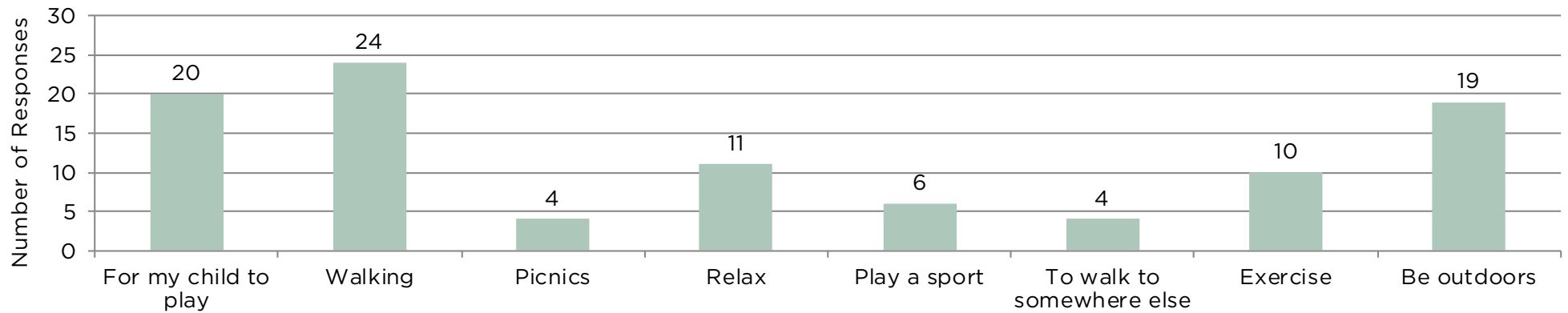
Q2: WHICH PARK(S) OR OTHER AREA AMENITIES HAVE YOU VISITED IN THE LAST 12 MONTHS?

FIGURE 4-3. Q2 RESULTS



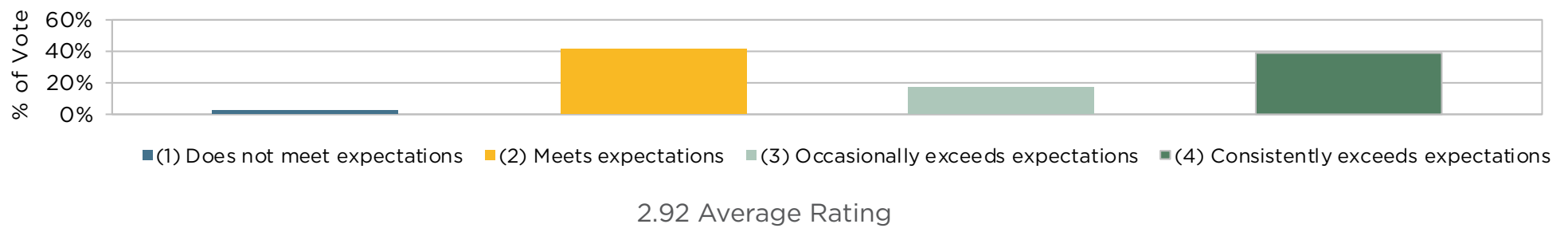
Q3: WHY DO YOU USUALLY VIST PARKS?

FIGURE 4-4. Q3 RESULTS



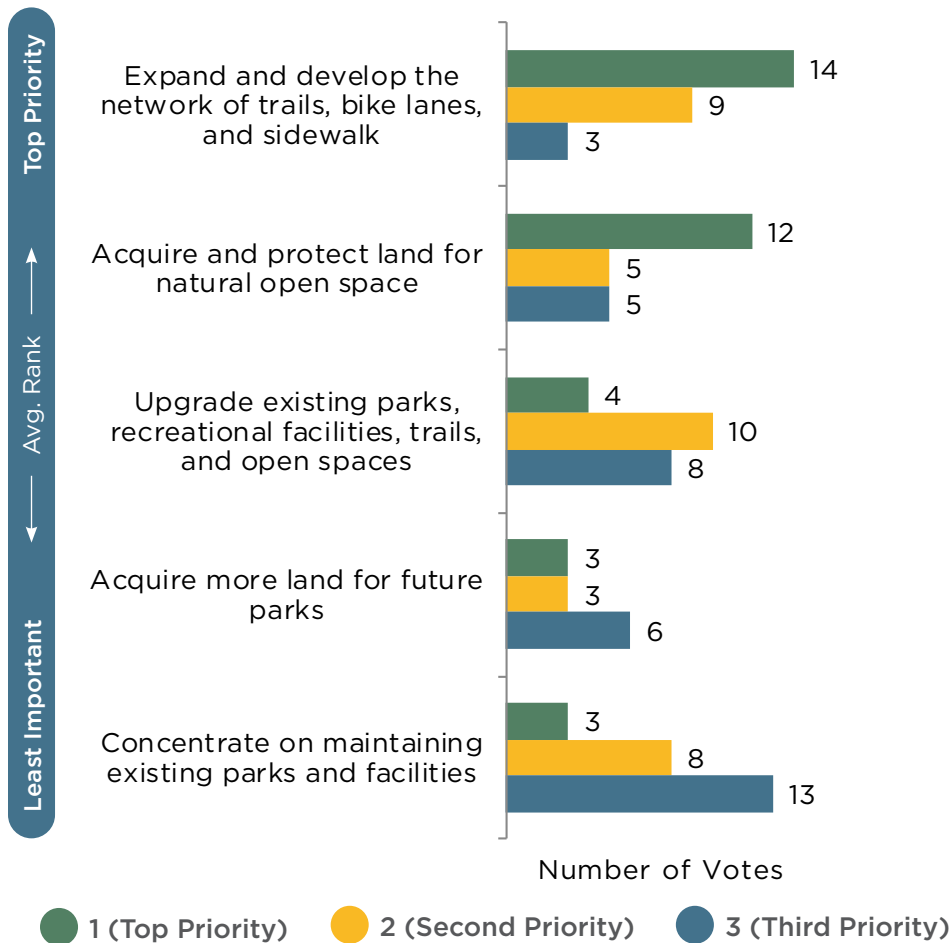
Q4: OVERALL, HOW SATISFIED ARE YOU WITH THE QUALITY AND CONDITION OF THE PARKS IN THE TOWN OF ALGOMA? (SCALE OF 1-4)

FIGURE 4-5. Q4 RESULTS




Q5: HOW CAN THE TOWN OF ALGOMA BEST IMPROVE THE LOCAL PARK SYSTEM? RANK UP TO THREE OPTIONS (1-3) WHERE 1 IS THE TOP PRIORITY TO YOU.

FIGURE 4-6. Q5 RESULTS



BICYCLE AND PEDESTRIAN ENHANCEMENTS

 "I would love to see sidewalks along Oakwood Road. The number of people walking the street in all four seasons makes me believe that they would be greatly used by people of all ages. Furthermore, the number of children and families that live in the areas between Oakwood elementary and the boat landing deeply need a safe way to walk to school."

"There absolutely has to be a signal on the crosswalk across Leonard Point Road to access Jones Park."

"We really need a safe crossway across 21. For families/kids to walk or bike for recreational and to even go to school if they'd choose."

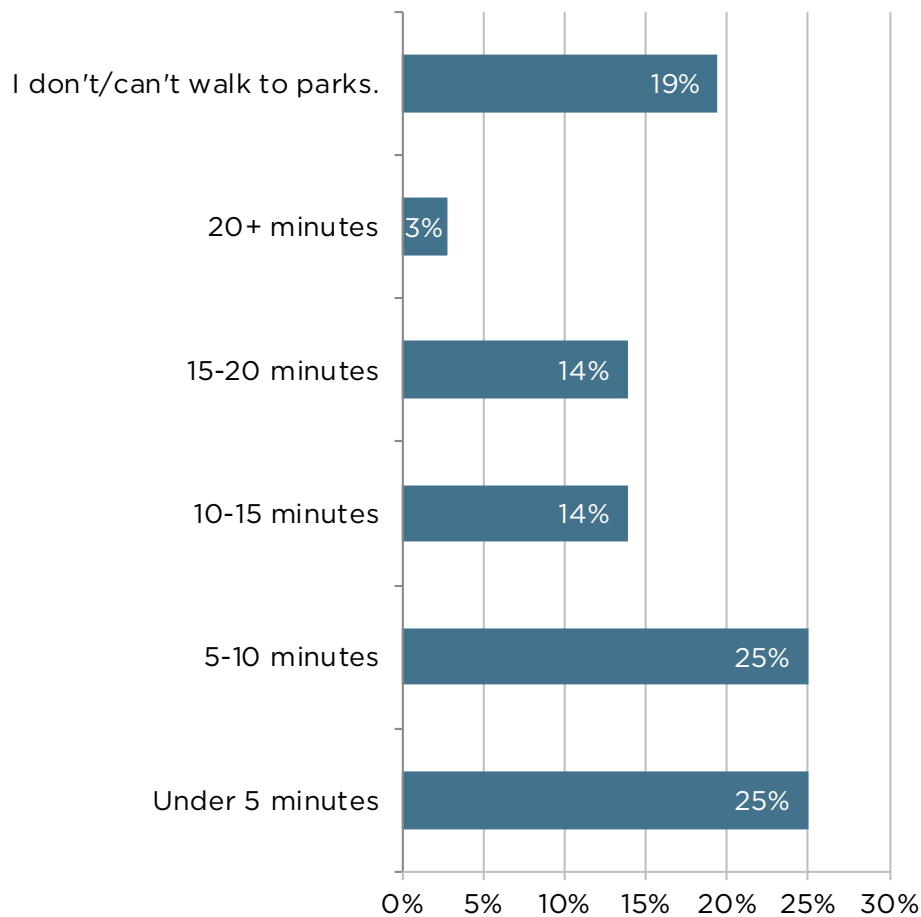
NEW PARKS & FACILITIES

 "Please add a park in the Overland [Trail] area."

"Use [the] Irvine farmhouse lot for additional park facilities (or a library)."

Q6: ON AVERAGE, HOW LONG DOES IT TAKE YOU TO REACH YOUR NEIGHBORHOOD PARK VIA WALKING?

FIGURE 4-7. Q6 RESULTS



BICYCLE AND PEDESTRIAN ENHANCEMENTS



"I drive to Jones Park because it's the nicest one in the area but it's too far to walk."

"We ride our bikes from Hickory Hills subdivision (Scarlet Oak Trail area) to Jones Park but often can't get there because of traffic on Leonard Point Road. This stops many families from walking or biking there safely!"

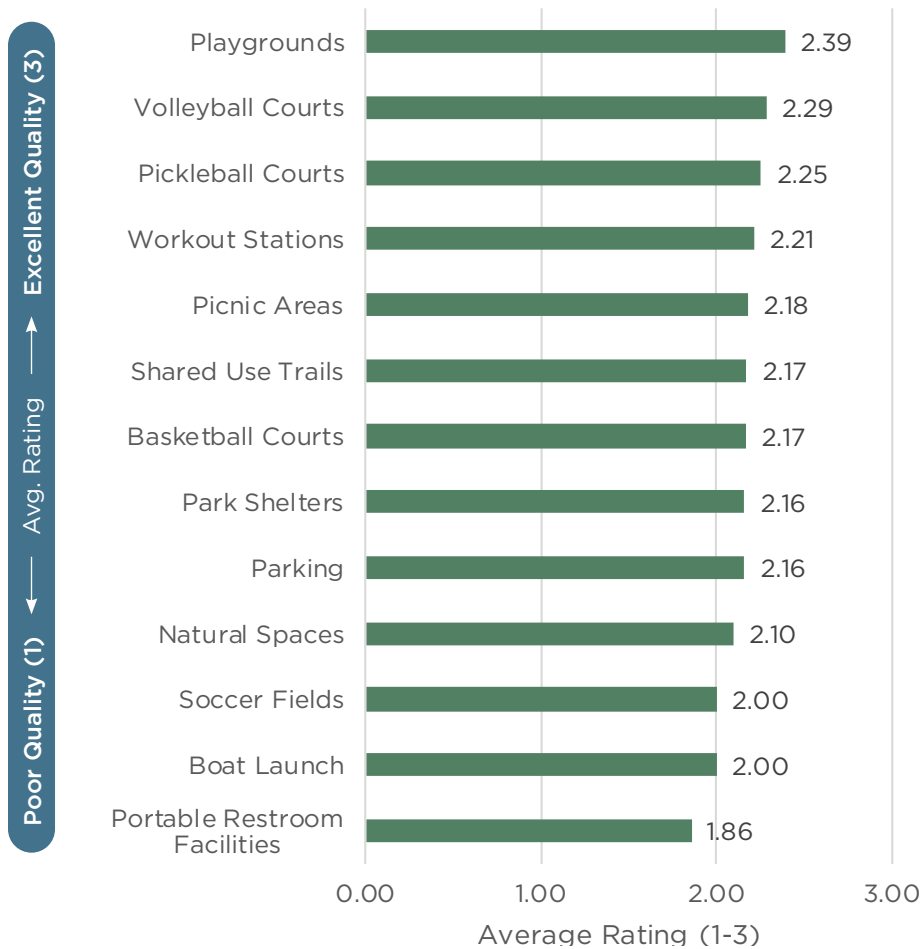
"Deep ditches on N Oakwood road make it dangerous for pedestrians to access Irvine pond or sidewalks on Omro road."

"Jones park would be the park we'd "walk" to and we would have to cross 21."

"I am a strong proponent of sidewalks from Oakwood Lane to Oakwood Elementary due to the need for a safe way to walk along Oakwood Road for everyone in the community. Oakwood Road is much too narrow to safely support the number of people and pets who walk the road daily."

Q7 PART 1: IN YOUR OPINION, WHICH PARK FACILITIES NEED IMPROVEMENT IN THE TOWN OF ALGOMA? PLEASE RATE THE QUALITY OF EACH FACILITY.

FIGURE 4-8. Q7 PART 1 RESULTS



PARK AND FACILITY UPGRADES



"Boat launch is not adequate. It's more a canoe and kayak launch."

"I would rate the ability to utilize garbages at parks [as] not adequate as well."

"The quantity and quality of parks is good, maybe 1-2 more depending on location but if it sacrifices improving current I would suggest to focus on current by improving facilities offered not only restrooms but also trails, pavilions, equipment, etc."

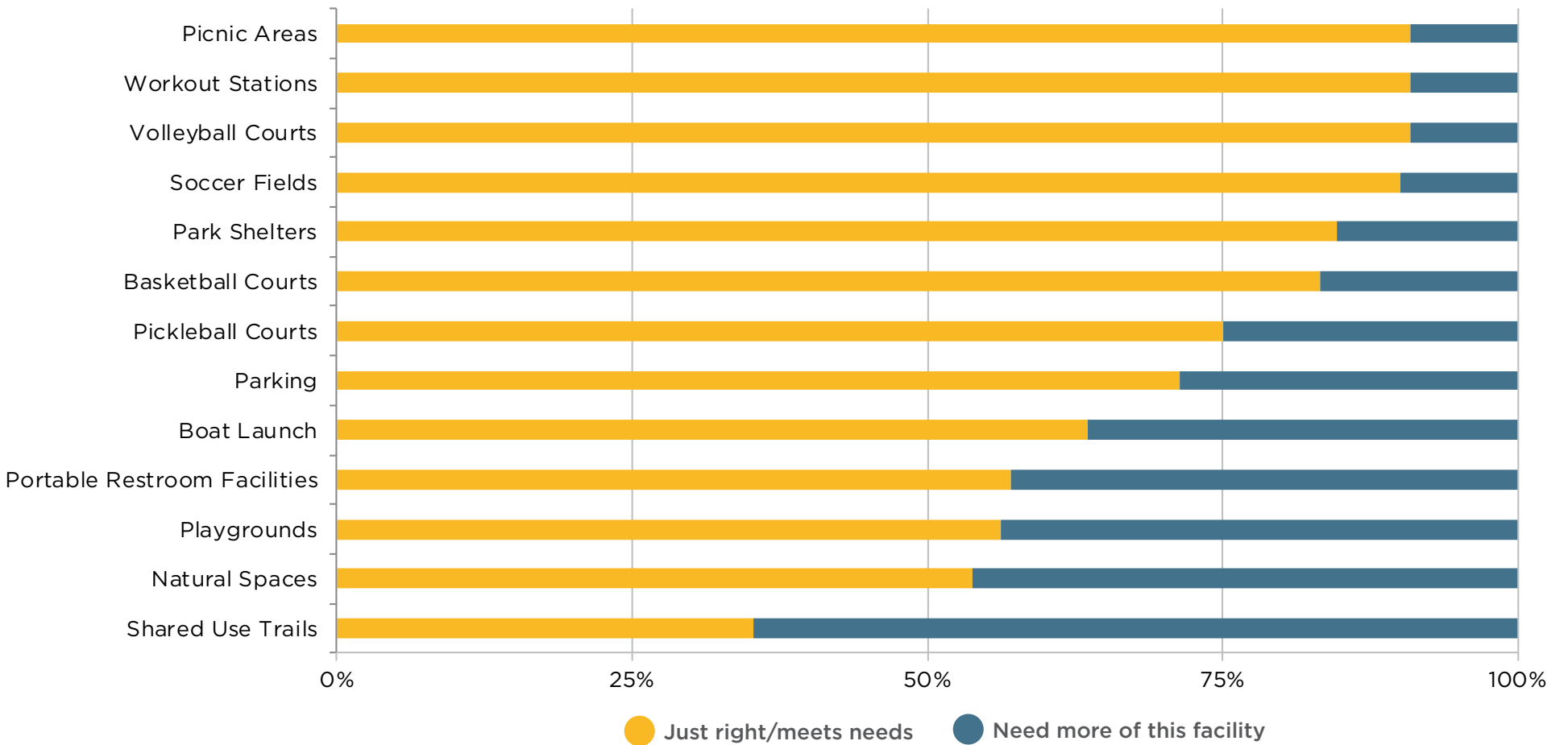
"Parking near the boat launch should be available."

"Need waste receptacles in close proximity to walking trails for pet waste."

"Need permanent restroom facilities not portable, especially at Jones Park."

Q7 PART 2: IN YOUR OPINION, WHICH PARK FACILITIES NEED IMPROVEMENT IN THE TOWN OF ALGOMA? PLEASE RATE THE SUPPLY OF EACH FACILITY.

FIGURE 4-9. Q7 PART 2 RESULTS



Q8: BASED ON YOUR HOUSEHOLD, WHAT ARE THE MOST POPULAR PARK AMENITIES THAT THE TOWN OF ALGOMA CURRENTLY OFFERS? PLEASE CHOOSE UP TO TWO (2) AMENITIES FOR EACH AGE GROUP IN YOUR HOUSEHOLD.

FIGURE 4-10. Q8 RESULTS

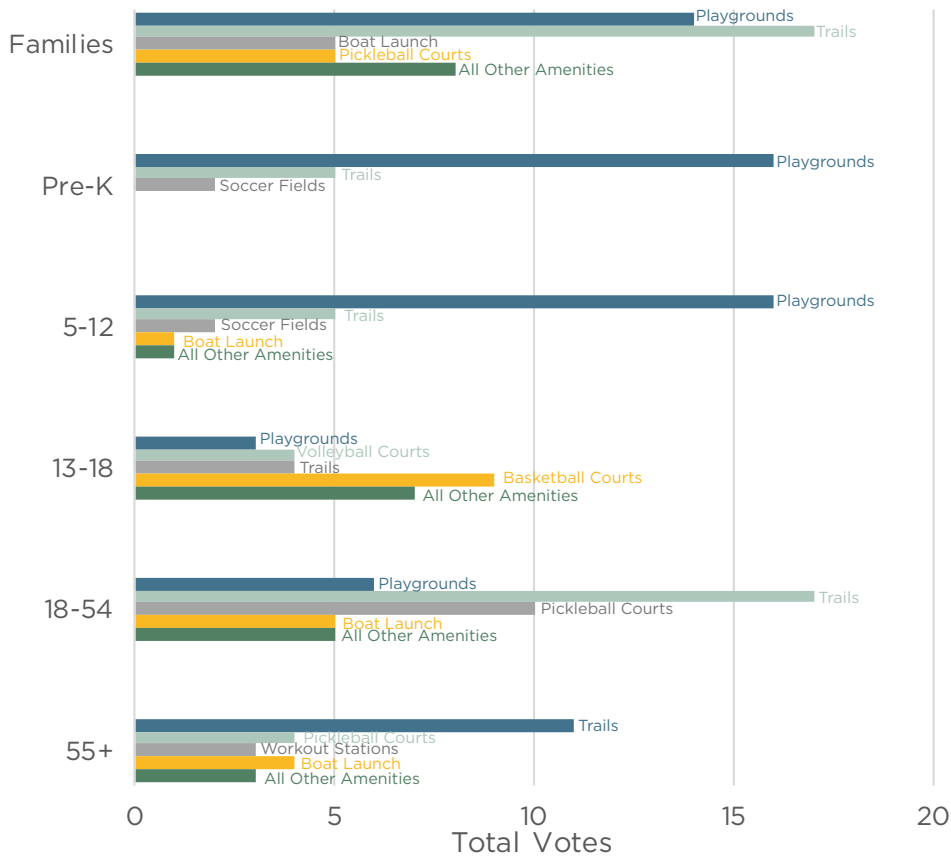
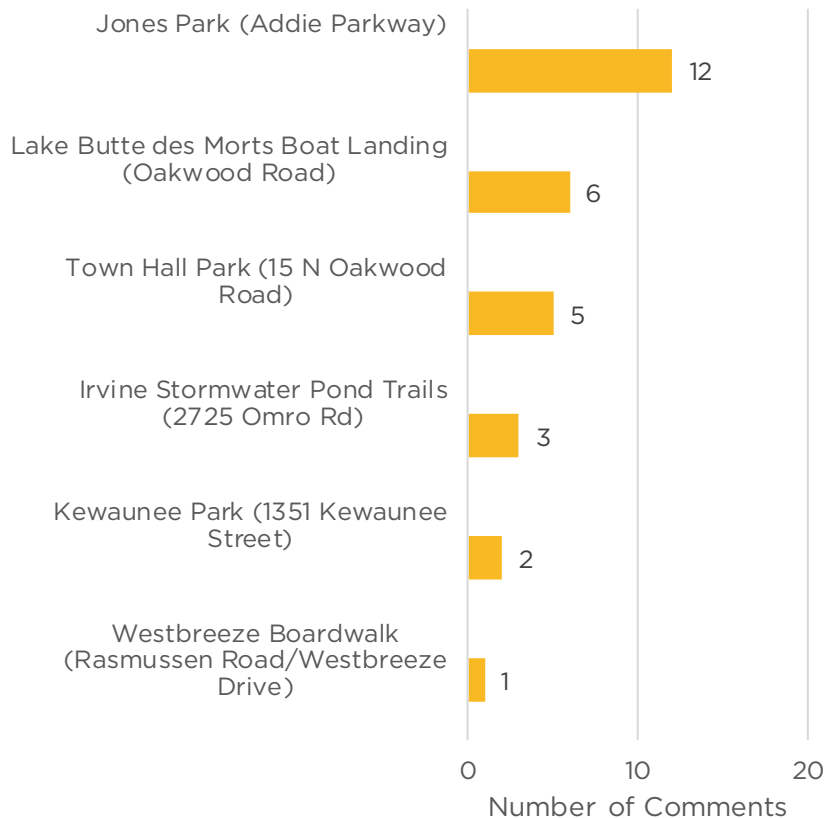


TABLE 4-1. Q8 RESULTS

Age Group	Survey Results	
	Top Pick Amenity	Second Pick Amenity
Families	Trails (71%)	Playgrounds (58%)
Pre-K	Playgrounds (100%)	Trails (31%)
5-12	Playgrounds (100%)	Trails (31%)
13-18	Basketball Courts (69%)	Volleyball Courts/Trails (31%)
18-54	Trails (71%)	Pickleball Courts (42%)
55+	Trails (79%)	Pickleball Courts/Boat Launch (29%)

Q9 & Q10: ARE THERE ANY ADDITIONAL RECREATIONAL AMENITIES, FACILITY IMPROVEMENTS, OR MAINTENANCE NEEDS THAT YOU FEEL ARE STRONGLY NEEDED AT A PARTICULAR PARK OR RECREATIONAL AREA IN THE TOWN?

FIGURE 4-11. Q9 & Q10 RESULTS



PARK AND FACILITY UPGRADES



Kewaunee Park: "More parking, but not sure how much that park gets used"

Town Hall Park: "Picnic tables and sitting area. Outdoor pavilion. Restroom access via town hall (door on outside of building to restrooms)."

Irvine Stormwater Pond Trails: "Waste receptacles, shade structure(s)."

Lake Butte des Morts Boat Landing: "Parking options. I don't understand how this is supposed to be used/accessed. We tried to ice skate here, and we couldn't park anywhere."

BICYCLE AND PEDESTRIAN ENHANCEMENTS

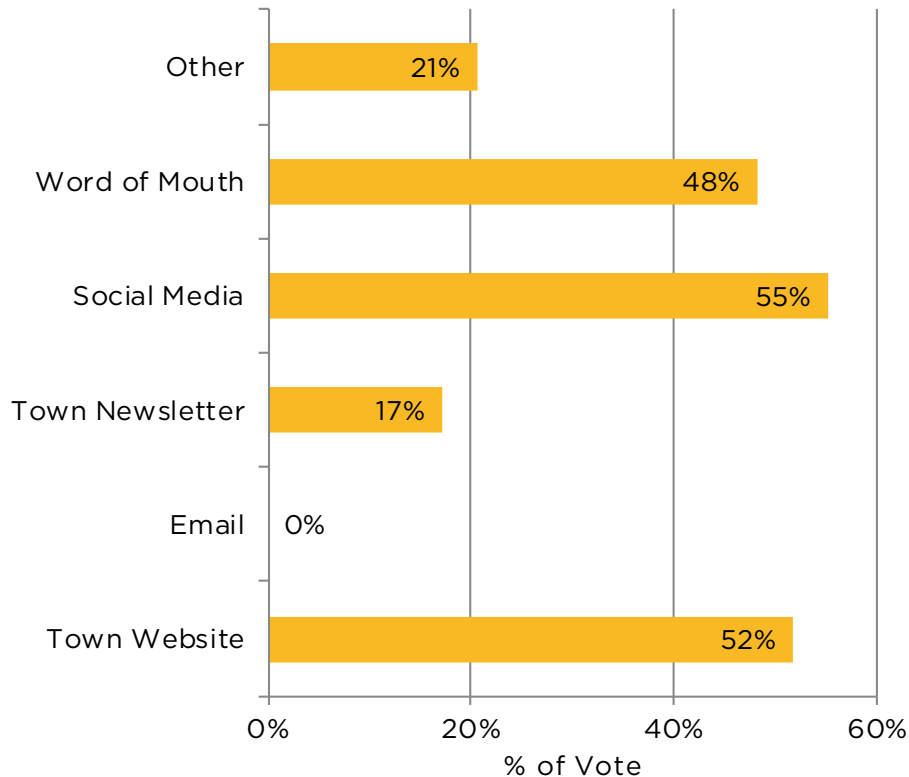


Jones Park: "Safe crossing for Leonard Point Road to access Jones Park! Crosswalk lights that can be activated by pushing a button."

Town Hall Park: "It would be nice to have a path for walkers/ bikers to cut through the property from Oakwood to Witzel. The roads are both wide enough for runners/walkers/bikers, but the intersection there doesn't leave much room for them. It would be nice to cut the corner through the town hall park."

Q11: HOW DO YOU GET INFORMATION ABOUT TOWN PARKS AND RECREATION PROGRAMS OR ACTIVITIES? PLEASE CHECK ALL THAT APPLY.

FIGURE 4-12. Q11 RESULTS



Q15: PLEASE PROVIDE ANY OTHER COMMENTS TO HELP US IMPROVE THE PARKS FOR THE TOWN OF ALGOMA.

PARK AND FACILITY UPGRADES



"Future improvements for [Jones] park might include an additional basketball court of even just another hoop. Another pickleball court and a fenced in dog area would also be greatly appreciated."

"Jones [Park] is used and beloved by many. There is a lot of opportunity to enhance even further with older kid style activities or play equipment, disc golfing and a cleaner looking retention pond."

NEW TRAILS & RECREATION OPPORTUNITIES



"I believe there is a need for safe recreational trails for walking and biking to connect different parts of the town and the City of Oshkosh. Specific over Highway's 21 and 41. The current crossings over 21 are very unsafe."

"Make use of the wooded lot where the Irvine home is located (When the timing is appropriate.) There is so much wildlife living there."

A large, leafy tree stands in the center of a rural landscape. A gravel path leads from the foreground towards a pond on the right. In the background, there are several buildings, including a barn, and a line of trees under a clear sky. The entire image is overlaid with a semi-transparent blue filter.

5

GOALS AND RECOMMENDATIONS

GOALS AND RECOMMENDATIONS

PLAN GOALS

The following goals and objectives were developed by reviewing the recreational needs assessment and identifying key themes from community input outlined in Chapter 3 and Chapter 4. These goals are common ideals of the community that can be achieved through the actions of government leaders, private organizations, and individual citizens.

Objectives specify in greater detail how these desired goals can be achieved. The goals and objectives provide a basis for establishing Town policy regarding the planning, acquisition, and future development of park and recreation facilities. Specific recommendations and action plans for each objective are also identified later in this chapter.





GOAL ONE

Facilitate safe and accessible bicycle and pedestrian connections to parks and destinations within the Town.

OBJECTIVES

- ▶ Develop plans for a network of trails and sidewalks strategically located throughout the Town of Algoma.
- ▶ Integrate sidewalks and/or bicycle lanes during road improvement projects at various high-usage roadways.
- ▶ Incorporate safe street crossings for pedestrians for easier parks access.
- ▶ Ensure all users can safely navigate the Town's park system via bicycle and pedestrian facilities.

GOAL TWO

Provide a variety of recreational amenities and transform vacant spaces into parks, trails, and open spaces that serve and engage the public.

OBJECTIVES

- ▶ Evaluate and develop plans for new park(s) to accommodate underserved residential areas, providing green space and recreational amenities for residents.
- ▶ Develop plans to expand trail network within existing parks and recreation sites.
- ▶ Integrate a variety of recreational amenities in the Town for use in all four seasons.



GOAL THREE

Improve the condition of existing park and recreation sites by upgrading infrastructure, enhancing maintenance, and improving accessibility to showcase the Town's unique character.

OBJECTIVES

- ▶ Upgrade playground equipment and surfaces at select parks.
- ▶ Address high-priority park needs and maintenance.
- ▶ Make improvements to the Butte des Morts Boat Landing to create a more functional space.
- ▶ Expand upon natural features and provide ongoing care in parks and recreational areas.
- ▶ Make incremental improvements to existing park sites to maintain a quality park and recreation system.

PLAN RECOMMENDATIONS

The recommendations identified in this plan seek to enhance the recreational infrastructure in a way that meets current needs while anticipating future growth and changes in the community. Accompanying the plan's goals and objectives, the following recommendations serve as a guide for the future development of parks, trails, and recreation areas in the Town of Algoma. The plan recommendations were drafted based on the findings from the recreational needs assessment, community input, discussions with Town staff, and discussions with the Planning Commission and Town Board.

Recommendations should be reviewed annually by the Town as implementation will require ongoing effort, coordination among stakeholders, and adaptability to changing circumstances. Although some of the identified recommendations may not be feasible to complete in five years, they represent a course of action that the Town should take if the opportunity arises.

The recommendations are also included in the action program tables with additional timeline and cost estimate details. The action program tables list projects that are feasible for implementation from 2026 to 2030. The table also includes rough cost estimates or ranges for planning purposes. It is important to note that there may be associated annual or periodic maintenance and management costs with certain amenities or infrastructure, therefore the Town's annual budget should reflect those potential costs.

Map 4-1 displays the recommended bicycle and pedestrian facilities based on existing bicycle and pedestrian plans for the area. If implemented, these recommendations would provide greater bicycle and pedestrian connectivity throughout the Town. There is a planned reconstruction project for part of Leonard Point Road in 2027. This project, which is part of the Oshkosh MPO, will incorporate bicycle and pedestrian facilities into the roadway.



FACILITATE SAFE AND ACCESSIBLE BICYCLE AND PEDESTRIAN CONNECTIONS TO PARKS AND DESTINATIONS WITHIN THE TOWN

OBJECTIVE 1-1. DEVELOP PLANS FOR A NETWORK OF TRAILS AND SIDEWALKS STRATEGICALLY LOCATED THROUGHOUT THE TOWN OF ALGOMA.

Recommendations

- ▶ Identify ideal trail and sidewalk locations that links parks and destinations, using Bicycle & Pedestrian Plans in place as reference.
- ▶ Create a master plan for the trails system informed by the input from residents and community partners.
- ▶ Ensure bicycle and pedestrian connectivity to future parks.

OBJECTIVE 1-2. INTEGRATE SIDEWALKS AND/OR BICYCLE LANES DURING ROAD IMPROVEMENT PROJECTS AT VARIOUS HIGH-USAGE ROADWAYS.

Recommendations

- ▶ Identify future roadway construction projects throughout the Town and ensure bicycle and pedestrian accommodations are incorporated.
- ▶ Work with key stakeholders to determine suitable types of bicycle and pedestrian improvements for each project.
- ▶ Prioritize adding lighting for enhanced visibility and safety.

FACILITATE SAFE AND ACCESSIBLE BICYCLE AND PEDESTRIAN CONNECTIONS TO PARKS AND DESTINATIONS WITHIN THE TOWN

OBJECTIVE 1-3. INCORPORATE SAFE STREET CROSSINGS FOR PEDESTRIANS FOR EASIER PARK ACCESS.

Recommendations

- ▶ Pinpoint key high-use locations that are lacking safe street crossings to parks and other destinations.
- ▶ Develop plans for each identified location to incorporate appropriate street crossings such as signal-controlled crosswalks, raised crossings, or push button crossings.
- ▶ Incorporate street lighting near street crossings to increase safety.

OBJECTIVE 1-4. ENSURE ALL USERS CAN SAFELY NAVIGATE THE TOWN'S PARK SYSTEM VIA BICYCLE AND PEDESTRIAN FACILITIES.

Recommendations

- ▶ Improve bicycle and pedestrian connectivity to the south.
- ▶ Work with county and state partners to remove major road barriers such as State Highway 21 and Witzel Avenue by incorporating safe street crossings into future planning.
- ▶ Replace existing gravel trails with pavement to ensure ADA-accessibility.
- ▶ Ensure bicycle and pedestrian connectivity to future parks.
- ▶ Prioritize safe routes to school throughout the Town.

PROVIDE A VARIETY OF RECREATIONAL AMENITIES AND TRANSFORM VACANT SPACES INTO PARKS, TRAILS, AND OPEN SPACES THAT SERVE AND ENGAGE THE PUBLIC.

OBJECTIVE 2-1. EVALUATE AND DEVELOP PLANS FOR NEW PARK(S) TO ACCOMMODATE UNDERSERVED RESIDENTIAL AREAS, PROVIDING GREEN SPACE AND RECREATIONAL AMENITIES FOR RESIDENTS.

Recommendations

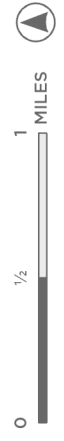
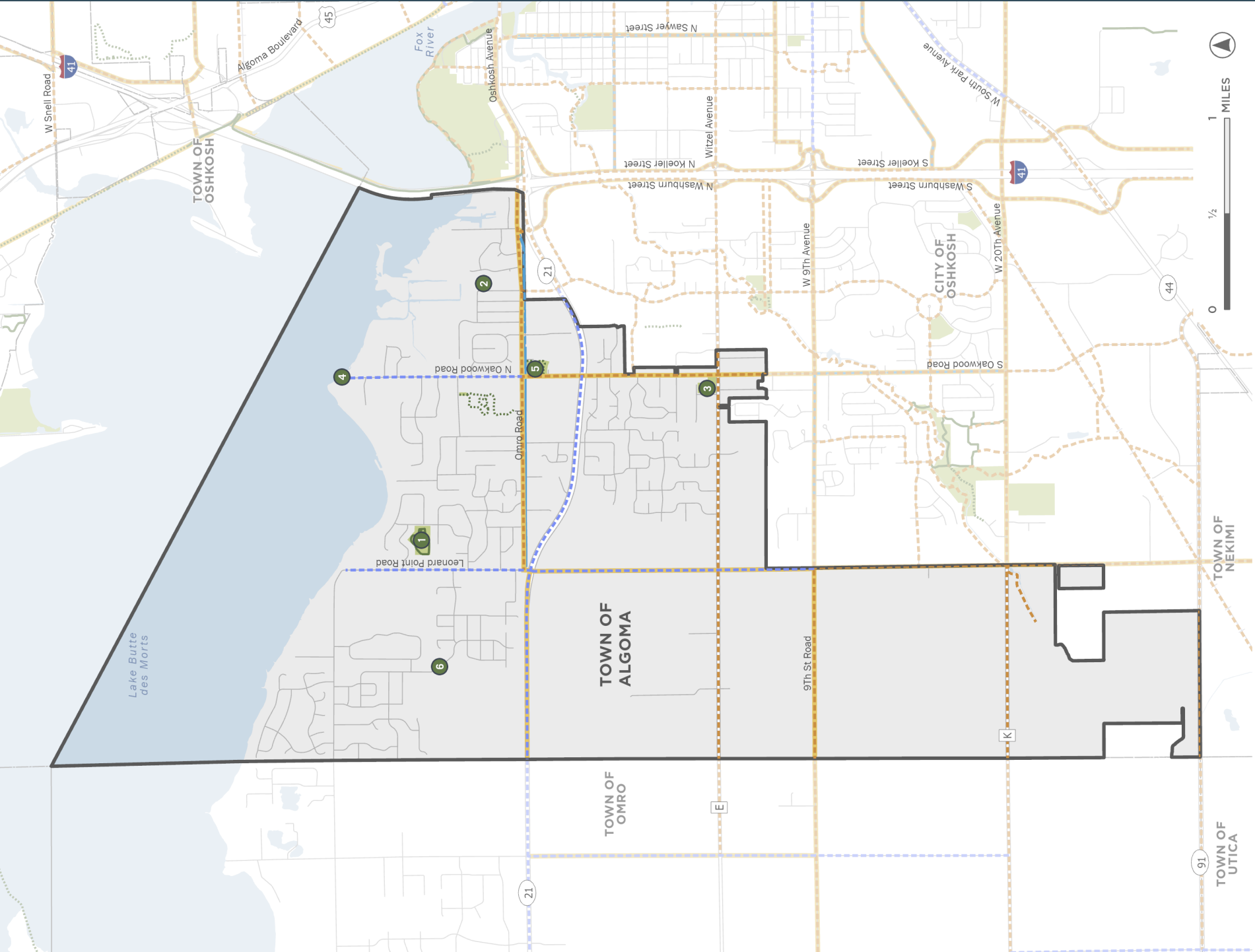
- ▶ Identify park site(s), focusing on underserved residential areas and lakefront areas. Purchase property if necessary.
- ▶ Develop a master plan for the new park(s).
- ▶ Conduct public outreach and engagement to gather community input, ensure that diverse perspectives are considered, and build broad support for the park development project(s).

OBJECTIVE 2-2. DEVELOP PLANS TO EXPAND TRAIL NETWORK WITHIN EXISTING PARKS AND RECREATION SITES.

Recommendations

- ▶ Identify sites within the Town's park network that could accommodate additional trails.
- ▶ Perform feasibility study(ies) and environmental site assessments to determine the viability and potential impacts.
- ▶ Develop plans for integrating new trails or boardwalks into existing parks and recreation sites, such as at the Westbreeze Boardwalk.
- ▶ Ensure bicycle and pedestrian connectivity to future parks.

MAP 4-1. RECOMMENDED BICYCLE AND PEDESTRIAN FACILITIES



- 1** Jones Park
 - 2** Kewaunee Park
 - 3** Town Hall Park
 - 4** Fishing Pier & Boat Landing
 - 5** Irvine Stormwater Pond Trail
 - 6** Westbreeze Boardwalk
- 2017 Winnebago County Bike & Ped Plan: Recommended Facility
 - 2019 City of Oshkosh Bike & Ped Plan: Recommended Facility
 - 2021 Oshkosh MPO Bike & Ped Plan: Recommended Network
 - Bike Lane
 - Paved Trail
 - Unpaved Trail

PROVIDE A VARIETY OF RECREATIONAL AMENITIES AND TRANSFORM VACANT SPACES INTO PARKS, TRAILS, AND OPEN SPACES THAT SERVE AND ENGAGE THE PUBLIC.

OBJECTIVE 2-3. INTEGRATE A VARIETY OF RECREATIONAL AMENITIES IN THE TOWN FOR USE IN ALL FOUR SEASONS.

Recommendations

- ▶ Incorporate outdoor athletic courts into parks such as additional pickleball courts, tennis courts, and/or basketball courts.
- ▶ Construct an additional park pavilion.
- ▶ Identify potential locations for a future ice rink and a dog park.
- ▶ Install an additional parking lot at Jones Park to accommodate high-usage.
- ▶ Develop plans for a wildlife viewing platform/deck off of the Westbreeze Boardwalk.
- ▶ Incorporate additional desirable and trending amenities as identified by NRPA such as disc golf courses, community gardens, kayak rental stations, and ball diamonds into the parks system.

IMPROVE THE CONDITION OF EXISTING PARK AND RECREATION SITES BY UPGRADING INFRASTRUCTURE, ENHANCING MAINTENANCE, AND IMPROVING ACCESSIBILITY TO SHOWCASE THE TOWN'S UNIQUE CHARACTER.

OBJECTIVE 3-1. UPGRADE PLAYGROUND EQUIPMENT AND SURFACES AT SELECT PARKS.

Recommendations

- ▶ Replace outdated playground equipment at select parks with inclusive, ADA-compliant equipment.
- ▶ Upgrade playground surfaces for increase safety and ADA-accessibility.
- ▶ Install lighting throughout park playground areas to enhance safety.

OBJECTIVE 3-2. ADDRESS HIGH-PRIORITY PARK NEEDS AND MAINTENANCE.

Recommendations

- ▶ Address parking issues at Lake Butte des Morts Boat Landing.
- ▶ Develop plans to incorporate a parking area into Kewaunee Park to increase usage.
- ▶ Install waste receptacles and/or dog waste stations to raise quality ratings across the system.
- ▶ Replace boards as necessary at the Westbreeze Boardwalk to ensure safety.

IMPROVE THE CONDITION OF EXISTING PARK AND RECREATION SITES BY UPGRADING INFRASTRUCTURE, ENHANCING MAINTENANCE, AND IMPROVING ACCESSIBILITY TO SHOWCASE THE TOWN'S UNIQUE CHARACTER.

OBJECTIVE 3-3. MAKE IMPROVEMENTS TO THE BUTTE DES MORTS BOAT LANDING TO CREATE A MORE FUNCTIONAL SPACE.

Recommendations

- ▶ Make repairs to the boat landing to ensure better accessibility to the water for all types of boaters.
- ▶ Address wear and make upgrades to the pier to improve safety.
- ▶ Install waste receptacles to reduce litter at the site.
- ▶ Consider adding a kayak rental station for public use.

OBJECTIVE 3-4. EXPAND UPON NATURAL FEATURES AND PROVIDE ONGOING CARE WITHIN PARKS AND RECREATIONAL AREAS

Recommendations

- ▶ Create and implement a tree planting plan.
- ▶ Add native plants and landscaping throughout the parks and recreation system.
- ▶ Continue routine maintenance of natural features within the parks system.

IMPROVE THE CONDITION OF EXISTING PARK AND RECREATION SITES BY UPGRADING INFRASTRUCTURE, ENHANCING MAINTENANCE, AND IMPROVING ACCESSIBILITY TO SHOWCASE THE TOWN'S UNIQUE CHARACTER.

OBJECTIVE 3-5. MAKE INCREMENTAL IMPROVEMENTS TO EXISTING PARK SITES TO MAINTAIN A QUALITY PARK AND RECREATION SYSTEM.

Recommendations

- ▶ Improve the surfaces of basketball and pickleball courts to maintain their integrity and longevity.
- ▶ Install an additional basketball hoop at Jones Park.
- ▶ Integrate permanent restroom facilities into select parks and recreational areas.
- ▶ Develop plans to add a disc golf course to the parks and recreation system.
- ▶ Construct additional shade structures and/or add shade trees at various locations throughout the parks system.

TABLE 5-1. TOWN OF ALGOMA CORP 5-YEAR ACTION PROGRAM (PART ONE)

Location & Project	2026	2027	2028	2029	2030	Estimated Construction/ Implementation Cost	Estimated Annual Maintenance Cost
Jones Park							
Add parking lot and pave gravel access trail on west side of park	x					\$110,000	Varies
Add more pickleball courts				x		\$20,000-\$50,000 (per court)	\$250-\$1,000
Pave remaining gravel trails & increase ADA accessibility throughout park			x			\$25,000-\$50,000	Varies
Install safe pedestrian crossing on Leonard Point Road		x				\$3,000-\$30,000	Varies
Upgrade playground surface to rubber surface		x				\$150,000	\$250-\$2,000
Pickleball court surface upgrades (coating)	x					\$4,000-\$10,000	N/A
Basketball court surface upgrades (coating)	x					\$3,000-\$10,000	N/A
Construct permanent park restroom facilities				x		\$80,000-\$200,000	\$10,000
Incorporate ADA accessible playground equipment into playground					x	\$1,500-\$10,000	Varies
Add additional basketball hoop		x				\$800-\$3,000	\$0
Lighting upgrades					x	\$5,000-\$12,000	Varies
Kewaunee Park							
Install new ADA accessible playground equipment			x			\$150,000-\$500,000	Varies
Upgrade playground surface to rubber surface			x			\$100,000-\$175,000	\$250-\$2,000
Lighting upgrades					x	\$5,000-\$12,000	Varies
Add parking lot/parking area		x				\$50,000-\$80,000	Varies
Install dog waste station/waste receptacles		x				\$300-\$600	\$150
Plant more trees throughout the park				x		\$5,000-\$12,000	Varies
Install dual use pickleball/tennis courts					x	\$20,000-\$50,000	\$250-\$1,000
Develop plans to integrate a pavilion or shelter into the park					x	N/A	N/A
Add picnic tables			x			\$300-\$800	\$0
Town Hall Park							
Install dog waste station/waste receptacles		x				\$300-\$600	\$150
Incorporate ADA accessible playground equipment into playground				x		\$1,500-\$10,000	Varies

TABLE 5-2. TOWN OF ALGOMA CORP 5-YEAR ACTION PROGRAM (PART TWO)

Location & Project	2026	2027	2028	2029	2030	Estimated Construction/Implementation Cost	Estimated Annual Maintenance Cost
Westbreeze Boardwalk							
Install dog waste station/waste receptacles		x				\$300-\$600	\$150
Replace boards in boardwalk as necessary		x		x		N/A	\$300
Create a master plan to expand trail/boardwalk			x			N/A	N/A
Install boardwalk/loop trail around pond with viewing platform				x		\$150,000-\$400,000	\$300
Irvine Stormwater Pond Trails							
Install new pavement along trail (consider porous pavement)			x			\$70,000-\$140,000	Varies
Install waste receptacles to accompany dog waste stations		x				\$300-\$600	\$150
Plant more trees & improve landscaping				x		\$5,000-\$15,000	Varies
Lake Butte des Morts Boat Landing							
Make repairs to boat landing/launch & upgrades to the pier	x					\$5,000	N/A
Install dog waste station/waste receptacles		x				\$300-\$600	\$150
Add parking accommodations		x				\$10,000-\$40,000	Varies
Install a kayak rental station					x	\$10,000-\$40,000	\$2,000-\$4,000
Other Projects							
Identify site & develop master plan for new parks within the Town			x			N/A	N/A
Conduct public outreach and gather community input for the new park project			x			N/A	N/A
Identify site & develop master plan for a fenced-in dog park				x		N/A	N/A
Identify site & develop master plan for a disc golf course					x	N/A	N/A
Identify site & develop plans for an ice rink					x	N/A	N/A
Improve bicycle & pedestrian connectivity		x				Varies	Varies
Develop plans to integrate an additional pavilion into parks system			x			N/A	N/A
Construct a pavilion				x		\$50,000-\$100,000	Varies
Create a tree planting plan for the Town		x				N/A	N/A
Projects Per Year	4	13	9	9	8	Total Projects	43

TABLE 5-3. WDNR KNOWLES-NELSON STEWARDSHIP LOCAL ASSISTANCE GRANT PROGRAMS

Program	Purpose	Funding Priorities	Details
Stewardship Local Assistance Acquisition and Development of Local Parks (ADLP) Subprogram	Helps communities and organizations acquire/develop/improve land for public nature-based outdoor recreation	<ul style="list-style-type: none"> • Support a local CORP; • Support multiple uses, for multiple seasons; • Are of regional/statewide significance; • Result in a first-of-a-kind facility for the applicant; • Projects that involve the use of materials or products utilizing Wisconsin recycled products; • Provides recreation opportunities for elderly, minorities, disabled, and low-income populations; • Project facility planned will be more basic in attributes than elaborate; • Projects to renovate existing facilities that are in danger of being lost for public use; • Provide accessible recreation opportunities; and • Have other priority characteristics specified in statute/code. 	<ul style="list-style-type: none"> • 50% local match; • May 1st deadline; and • Project must be identified in local CORP.
Stewardship Local Assistance Acquisition of Development Rights (ADR) Subprogram	Protect natural, agricultural, and forest lands that provide nature-based outdoor recreation by purchasing development rights and compensating landowners for limited future development on their land	<ul style="list-style-type: none"> • Land with water frontage; • Land that provides a buffer between developed and natural areas; • Land that connects existing natural resource protection areas; and • Land with other priority characteristics specified in statute/code. 	<ul style="list-style-type: none"> • 50% local match; • May 1st deadline; and • Project must be identified in local CORP.
Stewardship Local Assistance Urban Greenspace (UGS) Subprogram	Supports acquisition of land for open natural areas and community gardens within or near urban areas	<ul style="list-style-type: none"> • Preserves land on the natural heritage inventory database; • Implements elements of approved water quality plans or initiatives; • Has unique natural features; • Provides a linear corridor connecting open natural areas; • Has water frontage; • Is of regional or statewide significance; • Land related to brownfields redevelopment; • Land can accommodate all NBOA uses; hunting, fishing, trapping, hiking, and cross country skiing; • Provides area for community gardens; • Has other priority characteristics specified in statute/code; and • Involve two or more governmental agencies. 	<ul style="list-style-type: none"> • 50% local match; • May 1st deadline; and • Project must be identified in local CORP.
Stewardship Local Assistance Urban Rivers (UR) Subprogram	Helps restore and preserve the character of urban river corridors through the acquisition and development of land adjacent to rivers	<ul style="list-style-type: none"> • Restore river corridors following dam removal; • Support redevelopment of brownfields; • Acquire land with unique natural or aesthetic values; • Acquire land that connects with previous land acquisitions; • Provide outdoor recreation opportunities for diverse urban populations; • Provide new or expanded access to urban waterways; • Involve two or more governmental agencies; • Support local/regional plans; and • Have other priority characteristics specified in statute/code. 	<ul style="list-style-type: none"> • 50% local match; • May 1st deadline; and • Project must be identified in local CORP.

TABLE 5-4. FEDERAL RECREATION GRANT PROGRAMS

Program	Purpose	Funding Priorities	Details
Federal Land and Water Conservation Fund (LWCF)	Supports land acquisition and development of high-quality outdoor recreation amenities in local communities	<ul style="list-style-type: none"> • Meet the needs of urban areas; • Provide recreation opportunities for elderly, minority, disabled, and low-income populations; • Acquire land in areas with limited outdoor recreation facilities; • Provide multi-use and multi-season facilities; • Enhance or preserve natural beauty; • Are proposed by applicants which have sufficient financial resources to adequately maintain and operate the project; and • Have other priority characteristics specified in law/statute/code or the LWCF Federal Financial Assistance Manual, Vol. 72. 	<ul style="list-style-type: none"> • 50% local match; • May 1st deadline; and • Project must be identified in local CORP.
Federal Recreational Trails Program (RTP)	Provides funds to develop and maintain recreational trails and trail-related facilities for both motorized and non-motorized recreational trail uses	<ul style="list-style-type: none"> • Rehabilitation and maintenance of existing trails and trailhead facilities; • Development of new trails, trail linkages and trailhead facilities (some restrictions apply on federal lands); and • Acquisition of property for trails in areas with limited trail opportunities. 	<ul style="list-style-type: none"> • 50% local match; • May 1st deadline; and • Project must be identified in local CORP and SCORP.



TABLE 5-5. ALL WDNR DEPARTMENT GRANT PROGRAMS (PART ONE)

Program	Website
Angler Recruitment, Retention and Reactivation (R3) Grants	https://dnr.wisconsin.gov/Aid/angler.html
ARPA Well Abandonment	https://dnr.wisconsin.gov/aid/WellAbandonmentARPA.html
ARPA Well Compensation	https://dnr.wisconsin.gov/aid/WellCompensationARPA.html
ATV Enhancement	https://dnr.wisconsin.gov/Aid/atvEnhancement.html
ATV Patrols	https://dnr.wisconsin.gov/ATV/ATVPatrolGrants
ATV Trails	https://dnr.wisconsin.gov/Aid/atvTrails.html
Boat Patrol Grants	https://dnr.wisconsin.gov/Boat/BoatPatrolGrant
Boating Infrastructure Grant (BIG) Program	https://dnr.wisconsin.gov/Aid/BIG.html
Clean Diesel Grant Program	https://dnr.wisconsin.gov/Aid/CleanDiesel.html
Clean Vessel Act	https://dnr.wisconsin.gov/Aid/CleanVessel.html
County Conservation Aids	https://dnr.wisconsin.gov/Aid/CountyConservation.html
County Forest Acquisition (Stewardship)	https://dnr.wisconsin.gov/topic/stewardship/applyCounty
County Forest Acreage Share Payments	https://dnr.wisconsin.gov/topic/CountyForests/
County Forest Administration Grants	https://dnr.wisconsin.gov/Aid/ForestAdmin.html
County Forest Sustainable Grant	https://dnr.wisconsin.gov/Aid/ForestSustainable.html
County Forest Wildlife Habitat Grant	https://dnr.wisconsin.gov/Aid/ForestHabitat.html
Dam - Municipal	https://dnr.wisconsin.gov/Aid/DamMunicipal.html
Dam - Removal	https://dnr.wisconsin.gov/Aid/DamRemoval.html
Dry Cleaner Environmental Response Fund (DERF)	https://dnr.wisconsin.gov/Aid/DERF.html
Emerging Contaminants - Small/Disadvantaged Communities Grant Program (EC-SDC)	https://dnr.wisconsin.gov/aid/EC-SDC.html
Forest Fire Protection (FFP)	https://dnr.wisconsin.gov/Aid/ForestFireProtection.html
Forest Landowner Grant Program (WFLGP)	https://dnr.wisconsin.gov/Aid/ForestLandowner.html
Friends of State Parks (Stewardship)	https://dnr.wisconsin.gov/topic/stewardship/ApplyFriends
Friends of State Parks and Forests (Heritage Trust Fund)	https://dnr.wisconsin.gov/topic/parks/friends/grants/heritagetrust
Habitat Area (Stewardship)	https://dnr.wisconsin.gov/topic/stewardship/applyNCO
Hunter R3 (Recruitment, Retention and Reactivation) Grant Program	https://dnr.wisconsin.gov/Aid/HunterRecruit.html
Landowner Incentive Program	https://dnr.wisconsin.gov/topic/endangeredresources/lip.html
Motorized Stewardship Grants	https://dnr.wisconsin.gov/Aid/MotorStew.html
Municipal Flood Control	https://dnr.wisconsin.gov/Aid/MunFloodControl.html
Natural Areas (Stewardship)	https://dnr.wisconsin.gov/topic/stewardship/applyNCO
Notice of Intent/Discharge Cost-Share Grants (NOD)	https://dnr.wisconsin.gov/Aid/NOD.html

TABLE 5-6. ALL WDNR DEPARTMENT GRANT PROGRAMS (PART TWO)

Program	Website
Off-Highway Motorcycle	https://dnr.wisconsin.gov/Aid/OHMTrails.html
Ready for Reuse Hazardous Substance Grants	https://dnr.wisconsin.gov/topic/Brownfields/rlfHaz.html
Ready for Reuse Petroleum Grants	https://dnr.wisconsin.gov/topic/Brownfields/rlfPetro.html
Recreational Boating Facilities	https://dnr.wisconsin.gov/topic/Brownfields/rlfPetro.html
Recycling Consolidation Grant	https://dnr.wisconsin.gov/Aid/Consolidation.html
Recycling Grant to Responsible Units	https://dnr.wisconsin.gov/Aid/Recycling.html
Shooting Range Grants	https://dnr.wisconsin.gov/Aid/ShootingRange.html
Snowmobile Trail Aids	https://dnr.wisconsin.gov/Aid/SnowmobileTrails.html
Snowmobile Patrols	https://dnr.wisconsin.gov/Snowmobile/SnowPatrolGrant
Sport Fish Restoration (SFR) - Boat Access	https://dnr.wisconsin.gov/Aid/SFR-BA
Sport Fish Restoration (SFR) - Fishing Piers	https://dnr.wisconsin.gov/Aid/SFR-FP
Stamp Funds - Wild Turkey, Pheasant and Waterfowl	https://dnr.wisconsin.gov/topic/WildlifeHabitat/stamps.html
State Trails (Stewardship)	https://dnr.wisconsin.gov/topic/stewardship/applyNCO
Streambank Protection (Stewardship)	https://dnr.wisconsin.gov/topic/stewardship/applyNCO
Summer Tribal Youth Program	https://dnr.wisconsin.gov/Aid/styp.html
Surface Water Grants	https://dnr.wisconsin.gov/Aid/SurfaceWater.html
Targeted Runoff Management Grants	https://dnr.wisconsin.gov/Aid/TargetedRunoff.html
Underserved Drinking Water System	https://dnr.wisconsin.gov/aid/udws
Urban Forestry	https://dnr.wisconsin.gov/topic/UrbanForests/grants/index.html
Urban Forestry Catastrophic Storm Grant	https://dnr.wisconsin.gov/topic/UrbanForests/grants/index.html
Urban Nonpoint Source & Storm Water Management Grants	https://dnr.wisconsin.gov/Aid/UrbanNonpoint.html
Urban Wildlife Damage/Abatement Control	https://dnr.wisconsin.gov/Aid/UWDAC.html
Utility Terrain Vehicle (UTV) Trails	https://dnr.wisconsin.gov/Aid/UTVTrails.html
Weed Management Area - Private Forest Grant Program (WMA-PFGP)	https://dnr.wisconsin.gov/Aid/WMA.html
Well Abandonment	https://dnr.wisconsin.gov/Aid/WellAbandonment.html
Well Compensation	https://dnr.wisconsin.gov/Aid/WellCompensation.html
Wildlife Damage Abatement and Claims Program	https://dnr.wisconsin.gov/Aid/WDACP.html
Wisconsin Assessment Monies (WAM)	https://dnr.wisconsin.gov/topic/brownfields/wam.html
Wisconsin Habitat Partnership Fund	https://dnr.wisconsin.gov/aid/whpf.html
Wisconsin Wetland Conservation Trust in Lieu Fee Mitigation Program (WWCT)	https://dnr.wisconsin.gov/topic/wetlands/wwct

TABLE 5-7. OTHER FEDERAL, STATE, AND COMMUNITY GRANT PROGRAMS

Program	Partner	Purpose	Website
Surface Transportation Block Grant program (STBG)	Wisconsin Department of Transportation	Provides flexible funding that may be used by States and localities for projects to preserve and improve the conditions and performance on any Federal-aid highway, bridge and tunnel projects on any public road, pedestrian and bicycle infrastructure, and transit capital projects, including interTown bus terminals	https://www.fhwa.dot.gov/specialfunding/stp/
Highway Safety Improvement Program (HSIP)	Wisconsin Department of Transportation	Develop and implement, on a continuing basis, stand-alone safety projects designed to reduce the number and severity of crashes on all streets and highways	https://safety.fhwa.dot.gov/hsip/
Safe Routes to School (SRTS) Grant Program	East Central Wisconsin Regional Planning Commission	Provides funding and programming for bicycle and pedestrian activities to promote walking and biking to school	https://eastcentralsrts.org/
Community Development Block Grant program (CDBG)	Wisconsin Department of Administration	Provides annual grants to develop decent housing and a suitable living environment, expanding economic opportunities for low- and moderate-income people	https://doa.wi.gov/DECHR/DEHCR%20CDBG%20Brochure.pdf
Community Facilities Direct Loan and Grant Program	U.S. Department of Agriculture	Provides affordable funding to develop essential community facilities (e.g. health care, street improvements, community centers, libraries, community gardens) in rural areas with no more than 20,000 residents	https://www.rd.usda.gov/programs-services/community-facilities/community-facilities-direct-loan-grant-program-16
Rural Community Development Initiative Grants	U.S. Department of Agriculture	Support housing, community facilities and community and economic development projects in rural areas	https://www.rd.usda.gov/programs-services/community-facilities/rural-community-development-initiative-grants
Environmental Education (EE) Grants	U.S. Environmental Protection Agency	Provides financial support for projects that design, demonstrate, and/or disseminate environmental education practices, methods, or techniques	https://www.epa.gov/education/grants
Oshkosh Area Community Foundation Grants	Oshkosh Area Community Foundation	Preserve and improve the quality of life in the Oshkosh area.	https://www.oshkoshareacf.org/apply-for-grants/#

6

RESOLUTION OF ADOPTION

Resolution of Adoption

**TOWN OF ALGOMA
WINNEBAGO COUNTY, WISCONSIN
RESOLUTION NO. 2025-7**

A RESOLUTION TO ADOPT THE COMPREHENSIVE OUTDOOR RECREATION PLAN

The Town Board of the Town of Algoma, Winnebago County, Wisconsin does hereby resolve as follows:

WHEREAS, the Town of Algoma has requested the development of a community wide open space and recreation facilities plan; and

WHEREAS, Town staff have incorporated previous Town planning documents and worked closely with other parties to prepare the Town's open space and recreation facilities plan; and

WHEREAS, the Town of Algoma Comprehensive Outdoor Recreation Plan encompasses a general outline and is a valuable tool for development of parks and recreation facilities throughout the Town through the year 2030; and

WHEREAS, adoption of said plan is required for the Town of Algoma to become eligible for cost sharing aid programs administered by the State of Wisconsin;


NOW, THEREFORE, BE IT RESOLVED, that the Town of Algoma Town Board adopt the attached Town of Algoma Comprehensive Outdoor Recreation Plan (CORP) as the approved park and recreation plan for the Town.

Adopted this 17th day of December, 2025.



Joel Rasmussen, Chairman
Town of Algoma Board

ATTEST:



Katherine Reinbold, Clerk/Treasurer
Town of Algoma



Town of Algoma

15 N Oakwood Rd, Oshkosh, WI 54904

Phone: 920-235-3789

